

# CATALOGUE 2011



**To conciliate  
Knowledge and People**



A company of  **Parta**  
Solutions Durables

**Our purpose | Your success**

**Contact us:** [www.eduperformance.com](http://www.eduperformance.com)

**[ EDU-PERFORMANCE CANADA**

7900, Boul. Taschereau Ouest, Suite A-207

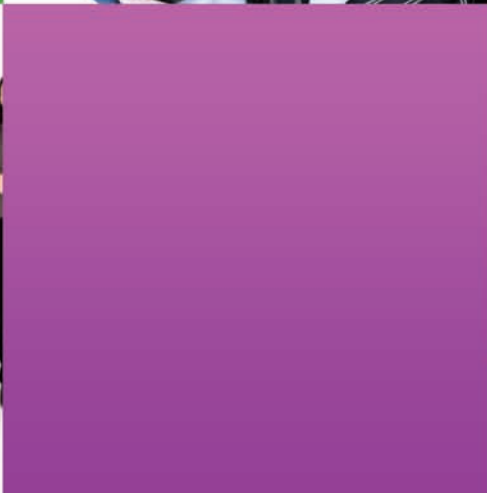
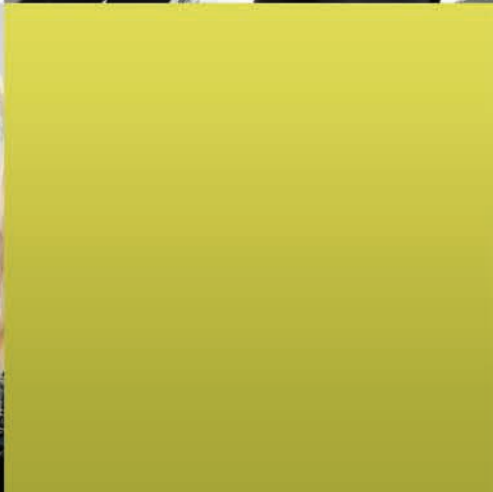
Brossard, Québec, J4X 1C2

Tel.: **(450) 466-7275 # 21**

Fax: (450) 466-4915

North America: 1-888-EDU-PERF (338-7373)

**Email: [info@eduperformance.com](mailto:info@eduperformance.com) ]**





# SUMMARY



## Internet Campus

Office Automation	<b>1</b>
Practical Evaluations	<b>2</b>
Theoretical Evaluations	<b>3</b>
Sustainable Development	<b>4</b>
Other	<b>5</b>
Data Processing	<b>6</b>
Languages	<b>7</b>

All our training courses on the Internet Campus are certified MS Windows 7 compatible.



## CD-ROM

Office Automation Learning Software	<b>1 2</b>
-------------------------------------	------------

The Office Automation CD-ROM versions require the use of a floppy disk drive or USB port (with additional fees) to install the license.



## Manual Training

Office Automation	<b>1</b>
-------------------	----------

The manuals are only available in .pdf format.

Each manual is the content of a training module of our office automation online training.

# Office Automation

General training

Microsoft

OpenOffice.org version 2.0

Lotus



## GENERAL TRAINING

1.1

CATEGORY/SUBCATEGORY	LANGUAGES					DURATION			PRICE		
	Fr.	Eng.	Spa.	Eng./Fr.	Eng./Dutch	3 months	6 months	12 months	3 months	6 months	12 months
<b>Training for Informatique Pratique</b>											
Module 1 - Informatique Pratique	FR					180 min	<b>20 \$/12 €</b>	<b>30 \$/18 €</b>	<b>40 \$/24 €</b>		
Module 2 - Informatique Pratique	FR					260 min	<b>20 \$/12 €</b>	<b>30 \$/18 €</b>	<b>40 \$/24 €</b>		
Module 3 - Informatique Pratique	FR					220 min	<b>20 \$/12 €</b>	<b>30 \$/18 €</b>	<b>40 \$/24 €</b>		
<b>Training for Internet Pratique</b>											
Module 1 - Internet Pratique	FR					220 min	<b>20 \$/12 €</b>	<b>30 \$/18 €</b>	<b>40 \$/24 €</b>		
Module 2 - Internet Pratique	FR					220 min	<b>20 \$/12 €</b>	<b>30 \$/18 €</b>	<b>40 \$/24 €</b>		
Module 3 - Internet Pratique	FR					180 min	<b>20 \$/12 €</b>	<b>30 \$/18 €</b>	<b>40 \$/24 €</b>		
<b>Introduction to PCs</b>											
Introduction to PCs series		Eng.				300 min	<b>34 \$/26 €</b>	<b>52 \$/39 €</b>	<b>68 \$/52 €</b>		

## MICROSOFT

MS OFFICE 2010

CATEGORY/SUBCATEGORY	LANGUAGES					DURATION			PRICE		
	Fr.	Eng.	Spa.	Eng./Fr.	Eng./Dutch	3 months	6 months	12 months	3 months	6 months	12 months
<b>Training for Microsoft Word 2010</b>											
Module 1 - Microsoft Word 2010	FR					220 min	<b>20 \$/12 €</b>	<b>30 \$/18 €</b>	<b>40 \$/24 €</b>		
Module 2 - Microsoft Word 2010	FR					240 min	<b>20 \$/12 €</b>	<b>30 \$/18 €</b>	<b>40 \$/24 €</b>		
Module 3 - Microsoft Word 2010	FR					200 min	<b>20 \$/12 €</b>	<b>30 \$/18 €</b>	<b>40 \$/24 €</b>		
Module 4 - Microsoft Word 2010	Coming up										
Module 5 - Microsoft Word 2010	Coming up										
Module 6 - Microsoft Word 2010	Coming up										
<b>Training for Microsoft Excel 2010</b>											
Module 1 - Microsoft Excel 2010	Coming up										
Module 2 - Microsoft Excel 2010	Coming up										
Module 3 - Microsoft Excel 2010	Coming up										
Module 4 - Microsoft Excel 2010	Coming up										
Module 5 - Microsoft Excel 2010	Coming up										
Module 6 - Microsoft Excel 2010	Coming up										
<b>Training for Microsoft Outlook 2010</b>											
Module 1 - Microsoft Outlook 2010	Coming up										
Module 2 - Microsoft Outlook 2010	Coming up										
Module 3 - Microsoft Outlook 2010	Coming up										
Module 4 - Microsoft Outlook 2010	Coming up										
Module 5 - Microsoft Outlook 2010	Coming up										
Module 6 - Microsoft Outlook 2010	Coming up										
<b>Training for Microsoft PowerPoint 2010</b>											
Module 1 - Microsoft PowerPoint 2010	Coming up										
Module 2 - Microsoft PowerPoint 2010	Coming up										
Module 3 - Microsoft PowerPoint 2010	Coming up										
Module 4 - Microsoft PowerPoint 2010	Coming up										
Module 5 - Microsoft PowerPoint 2010	Coming up										
Module 6 - Microsoft PowerPoint 2010	Coming up										

Legend : Available in CD-ROM version

no sound Course outline different from the French version

# MICROSOFT

## MS OFFICE 2010

CATEGORY/SUBCATEGORY	LANGUAGES					DURATION			PRICE		
	Fr.	Eng.	Spa.	Eng./Fr.	Eng./Dutch				3 months	6 months	12 months
<b>Training for Microsoft Access 2010</b>											
Module 1 - Microsoft Access 2010											
Module 2 - Microsoft Access 2010											
Module 3 - Microsoft Access 2010											
Module 4 - Microsoft Access 2010											
Module 5 - Microsoft Access 2010											
Module 6 - Microsoft Access 2010											
<b>Training for Upgrade 2007-2010</b>											
Module 1 - Upgrade 2007-2010	FR					200 min			20 \$/12 €	30 \$/18 €	40 \$/24 €
Module 2 - Upgrade 2007-2010	FR					120 min			20 \$/12 €	30 \$/18 €	40 \$/24 €
<b>Training for MS Office 2010</b>											
MS Office 2010 Series		Eng.				1260 min			34 \$/26 €	52 \$/39 €	68 \$/52 €

# MICROSOFT

## MS OFFICE 2007

CATEGORY/SUBCATEGORY	LANGUAGES					DURATION			PRICE		
	Fr.	Eng.	Spa.	Eng./Fr.	Eng./Dutch				3 months	6 months	12 months
<b>Training for Microsoft Access 2007</b>											
Module 1 - Microsoft Access 2007	FR					200 min			20 \$/12 €	30 \$/18 €	40 \$/24 €
Module 2 - Microsoft Access 2007	FR					180 min			20 \$/12 €	30 \$/18 €	40 \$/24 €
Module 3 - Microsoft Access 2007	FR					120 min			20 \$/12 €	30 \$/18 €	40 \$/24 €
Module 4 - Microsoft Access 2007	FR					300 min			20 \$/12 €	30 \$/18 €	40 \$/24 €
Module 5 - Microsoft Access 2007	FR					180 min			20 \$/12 €	30 \$/18 €	40 \$/24 €
Module 6 - Microsoft Access 2007	FR					180 min			20 \$/12 €	30 \$/18 €	40 \$/24 €
<b>Training for MS Access 2007</b>											
MS Access 2007 Series		Eng.				300 min			34 \$/26 €	52 \$/39 €	68 \$/52 €
MS Access 2007 Advanced Series		Eng.				540 min			34 \$/26 €	52 \$/39 €	68 \$/52 €
<b>Training for Microsoft Excel 2007</b>											
Module 1 - Microsoft Excel 2007	FR					240 min			20 \$/12 €	30 \$/18 €	40 \$/24 €
Module 2 - Microsoft Excel 2007	FR					280 min			20 \$/12 €	30 \$/18 €	40 \$/24 €
Module 3 - Microsoft Excel 2007	FR					220 min			20 \$/12 €	30 \$/18 €	40 \$/24 €
Module 4 - Microsoft Excel 2007	FR					260 min			20 \$/12 €	30 \$/18 €	40 \$/24 €
Module 5 - Microsoft Excel 2007	FR					240 min			20 \$/12 €	30 \$/18 €	40 \$/24 €
Module 6 - Microsoft Excel 2007	FR					240 min			20 \$/12 €	30 \$/18 €	40 \$/24 €
<b>Training for MS Excel 2007</b>											
MS Excel 2007 Series		Eng.				330 min			34 \$/26 €	52 \$/39 €	68 \$/52 €
MS Excel 2007 Advanced Series		Eng.				720 min			34 \$/26 €	52 \$/39 €	68 \$/52 €
<b>Training for MS Office 2007</b>											
MS Office 2007 - What's New		Eng.				1020 min			32 \$/25 €	48 \$/37.50 €	64 \$/50 €
<b>Training for Microsoft Outlook 2007</b>											
Module 1 - Microsoft Outlook 2007	FR					200 min			20 \$/12 €	30 \$/18 €	40 \$/24 €
Module 2 - Microsoft Outlook 2007	FR					180 min			20 \$/12 €	30 \$/18 €	40 \$/24 €
Module 3 - Microsoft Outlook 2007	FR					140 min			20 \$/12 €	30 \$/18 €	40 \$/24 €
Module 4 - Microsoft Outlook 2007	FR					200 min			20 \$/12 €	30 \$/18 €	40 \$/24 €
Module 5 - Microsoft Outlook 2007	FR					140 min			20 \$/12 €	30 \$/18 €	40 \$/24 €
Module 6 - Microsoft Outlook 2007	FR					120 min			20 \$/12 €	30 \$/18 €	40 \$/24 €
<b>Training for MS Outlook 2007</b>											
MS Outlook 2007 Series		Eng.				900 min			34 \$/26 €	52 \$/39 €	68 \$/52 €
<b>Training for Microsoft PowerPoint 2007</b>											
Module 1 - Microsoft PowerPoint 2007	FR					180 min			20 \$/12 €	30 \$/18 €	40 \$/24 €
Module 2 - Microsoft PowerPoint 2007	FR					160 min			20 \$/12 €	30 \$/18 €	40 \$/24 €
Module 3 - Microsoft PowerPoint 2007	FR					220 min			20 \$/12 €	30 \$/18 €	40 \$/24 €
Module 4 - Microsoft PowerPoint 2007	FR					180 min			20 \$/12 €	30 \$/18 €	40 \$/24 €
Module 5 - Microsoft PowerPoint 2007	FR					120 min			20 \$/12 €	30 \$/18 €	40 \$/24 €
Module 6 - Microsoft PowerPoint 2007	FR					120 min			20 \$/12 €	30 \$/18 €	40 \$/24 €
<b>Training for MS PowerPoint 2007</b>											
MS PowerPoint 2007 Series		Eng.				1140 min			34 \$/26 €	52 \$/39 €	68 \$/52 €

# MICROSOFT

## MS OFFICE 2007

CATEGORY/SUBCATEGORY	LANGUAGES					DURATION	PRICE		
	Fr.	Eng.	Spa.	Eng./Fr.	Eng./Dutch		3 months	6 months	12 months
<b>Training for Microsoft Word 2007</b>									
Module 1 - Microsoft Word 2007	FR					200 min	20 \$/12 €	30 \$/18 €	40 \$/24 €
Module 2 - Microsoft Word 2007	FR					220 min	20 \$/12 €	30 \$/18 €	40 \$/24 €
Module 3 - Microsoft Word 2007	FR					180 min	20 \$/12 €	30 \$/18 €	40 \$/24 €
Module 4 - Microsoft Word 2007	FR					240 min	20 \$/12 €	30 \$/18 €	40 \$/24 €
Module 5 - Microsoft Word 2007	FR					220 min	20 \$/12 €	30 \$/18 €	40 \$/24 €
Module 6 - Microsoft Word 2007	FR					260 min	20 \$/12 €	30 \$/18 €	40 \$/24 €
<b>Training for MS Word 2007</b>									
MS Word 2007 Series		Eng.				840 min	34 \$/26 €	52 \$/39 €	68 \$/52 €

# MICROSOFT

## MS OFFICE 2003

CATEGORY/SUBCATEGORY	LANGUAGES					DURATION	PRICE		
	Fr.	Eng.	Spa.	Eng./Fr.	Eng./Dutch		3 months	6 months	12 months
<b>Training for Microsoft Access 2003</b>									
Module 1 - Microsoft Access 2003	FR					200 min	20 \$/12 €	30 \$/18 €	40 \$/24 €
Module 2 - Microsoft Access 2003	FR					160 min	20 \$/12 €	30 \$/18 €	40 \$/24 €
Module 3 - Microsoft Access 2003	FR					120 min	20 \$/12 €	30 \$/18 €	40 \$/24 €
Module 4 - Microsoft Access 2003	FR					280 min	20 \$/12 €	30 \$/18 €	40 \$/24 €
Module 5 - Microsoft Access 2003	FR					160 min	20 \$/12 €	30 \$/18 €	40 \$/24 €
Module 6 - Microsoft Access 2003	FR					200 min	20 \$/12 €	30 \$/18 €	40 \$/24 €
<b>Training for MS Access 2003</b>									
MS Access 2003 Series		Eng.				1320 min	34 \$/26 €	52 \$/39 €	68 \$/52 €
<b>Training for Microsoft Excel 2003</b>									
Module 1 - Microsoft Excel 2003	FR					260 min	20 \$/12 €	30 \$/18 €	40 \$/24 €
Module 2 - Microsoft Excel 2003	FR					260 min	20 \$/12 €	30 \$/18 €	40 \$/24 €
Module 3 - Microsoft Excel 2003	FR					260 min	20 \$/12 €	30 \$/18 €	40 \$/24 €
Module 4 - Microsoft Excel 2003	FR					260 min	20 \$/12 €	30 \$/18 €	40 \$/24 €
Module 5 - Microsoft Excel 2003	FR					220 min	20 \$/12 €	30 \$/18 €	40 \$/24 €
Module 6 - Microsoft Excel 2003	FR					260 min	20 \$/12 €	30 \$/18 €	40 \$/24 €
<b>Training for Microsoft Excel 2003</b>									
Module 1 - Microsoft Excel 2003				no sound	no sound	200 min	20 \$/12 €	30 \$/18 €	40 \$/24 €
Module 2 - Microsoft Excel 2003				no sound	no sound	180 min	20 \$/12 €	30 \$/18 €	40 \$/24 €
Module 3 - Microsoft Excel 2003				no sound	no sound	100 min	20 \$/12 €	30 \$/18 €	40 \$/24 €
Module 3+ - Microsoft Excel 2003				no sound	no sound	120 min	20 \$/12 €	30 \$/18 €	40 \$/24 €
<b>Training for MS Excel 2003</b>									
MS Excel 2003 Series		Eng.				1560 min	34 \$/26 €	52 \$/39 €	68 \$/52 €
<b>Training for MS Office 2003</b>									
MS Office 2003 - What's New		Eng.				120 min	32 \$/25 €	48 \$/37.50 €	64 \$/50 €
<b>Training for Microsoft Outlook 2003</b>									
Module 1 - Microsoft Outlook 2003	FR					200 min	20 \$/12 €	30 \$/18 €	40 \$/24 €
Module 2 - Microsoft Outlook 2003	FR					180 min	20 \$/12 €	30 \$/18 €	40 \$/24 €
Module 3 - Microsoft Outlook 2003	FR					140 min	20 \$/12 €	30 \$/18 €	40 \$/24 €
Module 4 - Microsoft Outlook 2003	FR					200 min	20 \$/12 €	30 \$/18 €	40 \$/24 €
Module 5 - Microsoft Outlook 2003	FR					140 min	20 \$/12 €	30 \$/18 €	40 \$/24 €
Module 6 - Microsoft Outlook 2003	FR					120 min	20 \$/12 €	30 \$/18 €	40 \$/24 €
<b>Training for Microsoft Outlook 2003</b>									
Module 1 - Microsoft Outlook 2003				no sound	no sound	180 min	20 \$/12 €	30 \$/18 €	40 \$/24 €
Module 2 - Microsoft Outlook 2003				no sound	no sound	160 min	20 \$/12 €	30 \$/18 €	40 \$/24 €
Module 3 - Microsoft Outlook 2003				no sound	no sound	100 min	20 \$/12 €	30 \$/18 €	40 \$/24 €
Module 3+ - Microsoft Outlook 2003				no sound	no sound	260 min	20 \$/12 €	30 \$/18 €	40 \$/24 €
<b>Training for MS Outlook 2003</b>									
MS Outlook 2003 Series		Eng.				1500 min	34 \$/26 €	52 \$/39 €	68 \$/52 €

# MICROSOFT

## MS OFFICE 2003

CATEGORY/SUBCATEGORY	LANGUAGES					DURATION			PRICE		
	Fr.	Eng.	Spa.	Eng./Fr.	Eng./Dutch				3 months	6 months	12 months

### Training for Microsoft PowerPoint 2003

Module 1 - Microsoft PowerPoint 2003	FR					180 min			20 \$/12 €	30 \$/18 €	40 \$/24 €
Module 2 - Microsoft PowerPoint 2003	FR					140 min			20 \$/12 €	30 \$/18 €	40 \$/24 €
Module 3 - Microsoft PowerPoint 2003	FR					180 min			20 \$/12 €	30 \$/18 €	40 \$/24 €
Module 4 - Microsoft PowerPoint 2003	FR					180 min			20 \$/12 €	30 \$/18 €	40 \$/24 €
Module 5 - Microsoft PowerPoint 2003	FR					100 min			20 \$/12 €	30 \$/18 €	40 \$/24 €
Module 6 - Microsoft PowerPoint 2003	FR					180 min			20 \$/12 €	30 \$/18 €	40 \$/24 €

### Training for Microsoft PowerPoint 2003

Module 1 - Microsoft PowerPoint 2003				no sound	no sound	200 min			20 \$/12 €	30 \$/18 €	40 \$/24 €
Module 2 - Microsoft PowerPoint 2003				no sound	no sound	120 min			20 \$/12 €	30 \$/18 €	40 \$/24 €
Module 3 - Microsoft PowerPoint 2003				no sound	no sound	180 min			20 \$/12 €	30 \$/18 €	40 \$/24 €
Module 3+ - Microsoft PowerPoint 2003				no sound	no sound	100 min			20 \$/12 €	30 \$/18 €	40 \$/24 €

### Training for MS PowerPoint 2003

MS PowerPoint 2003 Series	Eng.					1500 min			34 \$/26 €	52 \$/39 €	68 \$/52 €
---------------------------	------	--	--	--	--	----------	--	--	------------	------------	------------

### Training for Microsoft Word 2003

Module 1 - Microsoft Word 2003	FR					200 min			20 \$/12 €	30 \$/18 €	40 \$/24 €
Module 2 - Microsoft Word 2003	FR					220 min			20 \$/12 €	30 \$/18 €	40 \$/24 €
Module 3 - Microsoft Word 2003	FR					220 min			20 \$/12 €	30 \$/18 €	40 \$/24 €
Module 4 - Microsoft Word 2003	FR					220 min			20 \$/12 €	30 \$/18 €	40 \$/24 €
Module 5 - Microsoft Word 2003	FR					220 min			20 \$/12 €	30 \$/18 €	40 \$/24 €
Module 6 - Microsoft Word 2003	FR					260 min			20 \$/12 €	30 \$/18 €	40 \$/24 €

### Training for Microsoft Word 2003

Module 1 - Microsoft Word 2003				no sound	no sound	180 min			20 \$/12 €	30 \$/18 €	40 \$/24 €
Module 2 - Microsoft Word 2003				no sound	no sound	180 min			20 \$/12 €	30 \$/18 €	40 \$/24 €
Module 3 - Microsoft Word 2003				no sound	no sound	140 min			20 \$/12 €	30 \$/18 €	40 \$/24 €
Module 3+ - Microsoft Word 2003				no sound	no sound	140 min			20 \$/12 €	30 \$/18 €	40 \$/24 €

### Training for MS Word 2003

MS Word 2003 Series	Eng.					1920 min			34 \$/26 €	52 \$/39 €	68 \$/52 €
---------------------	------	--	--	--	--	----------	--	--	------------	------------	------------

# MICROSOFT

## MS OFFICE 2002

CATEGORY/SUBCATEGORY	LANGUAGES					DURATION			PRICE		
	Fr.	Eng.	Spa.	Eng./Fr.	Eng./Dutch				3 months	6 months	12 months

### Training for Microsoft Access 2002

Module 1 - Microsoft Access 2002	FR					220 min			20 \$/12 €	30 \$/18 €	40 \$/24 €
Module 2 - Microsoft Access 2002	FR					180 min			20 \$/12 €	30 \$/18 €	40 \$/24 €
Module 3 - Microsoft Access 2002	FR					140 min			20 \$/12 €	30 \$/18 €	40 \$/24 €
Module 4 - Microsoft Access 2002	FR					280 min			20 \$/12 €	30 \$/18 €	40 \$/24 €
Module 5 - Microsoft Access 2002	FR					180 min			20 \$/12 €	30 \$/18 €	40 \$/24 €
Module 6 - Microsoft Access 2002	FR					200 min			20 \$/12 €	30 \$/18 €	40 \$/24 €

### Training for MS Access 2002

MS Access 2002 Series	Eng.					1320 min			34 \$/26 €	52 \$/39 €	68 \$/52 €
-----------------------	------	--	--	--	--	----------	--	--	------------	------------	------------

### Training for Microsoft Excel 2002

Module 1 - Microsoft Excel 2002	FR	Eng.				220 min			20 \$/12 €	30 \$/18 €	40 \$/24 €
Module 2 - Microsoft Excel 2002	FR	Eng.				220 min			20 \$/12 €	30 \$/18 €	40 \$/24 €
Module 3 - Microsoft Excel 2002	FR	Eng.				180 min			20 \$/12 €	30 \$/18 €	40 \$/24 €
Module 4 - Microsoft Excel 2002	FR	Eng.				260 min			20 \$/12 €	30 \$/18 €	40 \$/24 €
Module 5 - Microsoft Excel 2002	FR	Eng.				200 min			20 \$/12 €	30 \$/18 €	40 \$/24 €
Module 6 - Microsoft Excel 2002	FR	Eng.				220 min			20 \$/12 €	30 \$/18 €	40 \$/24 €

### Training for Microsoft Excel 2002

Module 1 - Microsoft Excel 2002				no sound	no sound	220 min			20 \$/12 €	30 \$/18 €	40 \$/24 €
Module 2 - Microsoft Excel 2002				no sound	no sound	180 min			20 \$/12 €	30 \$/18 €	40 \$/24 €
Module 3 - Microsoft Excel 2002				no sound	no sound	100 min			20 \$/12 €	30 \$/18 €	40 \$/24 €
Module 3+ - Microsoft Excel 2002				no sound	no sound	140 min			20 \$/12 €	30 \$/18 €	40 \$/24 €

## MICROSOFT

## MS OFFICE 2002

CATEGORY/SUBCATEGORY	LANGUAGES					DURATION	PRICE		
	Fr.	Eng.	Spa.	Eng./Fr.	Eng./Dutch		3 months	6 months	12 months
<b>Training for Microsoft Excel 2002</b> Microsoft Excel 2002 - New Features	FR	Eng.				140 min	20 \$/12 €	30 \$/18 €	40 \$/24 €
<b>Training for MS Office XP</b> MS Office XP - Upgrade		Eng.				600 min	32 \$/25 €	48 \$/37.50 €	64 \$/50 €
<b>Training for Microsoft Outlook 2002</b> Module 1 - Microsoft Outlook 2002	FR					200 min	20 \$/12 €	30 \$/18 €	40 \$/24 €
Module 2 - Microsoft Outlook 2002	FR					180 min	20 \$/12 €	30 \$/18 €	40 \$/24 €
Module 3 - Microsoft Outlook 2002	FR					140 min	20 \$/12 €	30 \$/18 €	40 \$/24 €
Module 4 - Microsoft Outlook 2002	FR					200 min	20 \$/12 €	30 \$/18 €	40 \$/24 €
Module 5 - Microsoft Outlook 2002	FR					140 min	20 \$/12 €	30 \$/18 €	40 \$/24 €
Module 6 - Microsoft Outlook 2002	FR					120 min	20 \$/12 €	30 \$/18 €	40 \$/24 €
<b>Training for MS Outlook 2002</b> MS Outlook 2002 Series		Eng.				1080 min	34 \$/26 €	52 \$/39 €	68 \$/52 €
<b>Training for Microsoft PowerPoint 2002</b> Module 1 - Microsoft PowerPoint 2002	FR	Eng.				200 min	20 \$/12 €	30 \$/18 €	40 \$/24 €
Module 2 - Microsoft PowerPoint 2002	FR	Eng.				160 min	20 \$/12 €	30 \$/18 €	40 \$/24 €
Module 3 - Microsoft PowerPoint 2002	FR	Eng.				180 min	20 \$/12 €	30 \$/18 €	40 \$/24 €
Module 4 - Microsoft PowerPoint 2002	FR	Eng.				160 min	20 \$/12 €	30 \$/18 €	40 \$/24 €
Module 5 - Microsoft PowerPoint 2002	FR	Eng.				120 min	20 \$/12 €	30 \$/18 €	40 \$/24 €
Module 6 - Microsoft PowerPoint 2002	FR	Eng.				200 min	20 \$/12 €	30 \$/18 €	40 \$/24 €
<b>Training for Microsoft PowerPoint 2002</b> Module 1 - Microsoft PowerPoint 2002				no sound	no sound	200 min	20 \$/12 €	30 \$/18 €	40 \$/24 €
Module 2 - Microsoft PowerPoint 2002				no sound	no sound	120 min	20 \$/12 €	30 \$/18 €	40 \$/24 €
Module 3 - Microsoft PowerPoint 2002				no sound	no sound	180 min	20 \$/12 €	30 \$/18 €	40 \$/24 €
Module 3+ - Microsoft PowerPoint 2002				no sound	no sound	100 min	20 \$/12 €	30 \$/18 €	40 \$/24 €
<b>Training for Microsoft Word 2002</b> Module 1 - Microsoft Word 2002	FR	Eng.				180 min	20 \$/12 €	30 \$/18 €	40 \$/24 €
Module 2 - Microsoft Word 2002	FR	Eng.				220 min	20 \$/12 €	30 \$/18 €	40 \$/24 €
Module 3 - Microsoft Word 2002	FR	Eng.				180 min	20 \$/12 €	30 \$/18 €	40 \$/24 €
Module 4 - Microsoft Word 2002	FR	Eng.				180 min	20 \$/12 €	30 \$/18 €	40 \$/24 €
Module 5 - Microsoft Word 2002	FR	Eng.				160 min	20 \$/12 €	30 \$/18 €	40 \$/24 €
Module 6 - Microsoft Word 2002	FR	Eng.				200 min	20 \$/12 €	30 \$/18 €	40 \$/24 €
<b>Training for Microsoft Word 2002</b> Module 1 - Microsoft Word 2002				no sound	no sound	160 min	20 \$/12 €	30 \$/18 €	40 \$/24 €
Module 2 - Microsoft Word 2002				no sound	no sound	180 min	20 \$/12 €	30 \$/18 €	40 \$/24 €
Module 3 - Microsoft Word 2002				no sound	no sound	140 min	20 \$/12 €	30 \$/18 €	40 \$/24 €
Module 3+ - Microsoft Word 2002				no sound	no sound	140 min	20 \$/12 €	30 \$/18 €	40 \$/24 €
<b>Training for Microsoft Word 2002</b> Microsoft Word 2002 - New Features	FR	Eng.				120 min	20 \$/12 €	30 \$/18 €	40 \$/24 €

## MICROSOFT

## MS OFFICE 2000

CATEGORY/SUBCATEGORY	LANGUAGES					DURATION	PRICE		
	Fr.	Eng.	Spa.	Eng./Fr.	Eng./Dutch		3 months	6 months	12 months
<b>Training for Microsoft Access 2000</b> Module 1 - Microsoft Access 2000	FR	Eng.				200 min	20 \$/12 €	30 \$/18 €	40 \$/24 €
Module 2 - Microsoft Access 2000	FR	Eng.				180 min	20 \$/12 €	30 \$/18 €	40 \$/24 €
Module 3 - Microsoft Access 2000	FR	Eng.				180 min	20 \$/12 €	30 \$/18 €	40 \$/24 €
<b>Training for Microsoft Excel 2000</b> Module 1 - Microsoft Excel 2000	FR	Eng.				240 min	20 \$/12 €	30 \$/18 €	40 \$/24 €
Module 2 - Microsoft Excel 2000	FR	Eng.				220 min	20 \$/12 €	30 \$/18 €	40 \$/24 €
Module 3 - Microsoft Excel 2000	FR	Eng.				260 min	20 \$/12 €	30 \$/18 €	40 \$/24 €
<b>Training for Microsoft Office 2000</b> Microsoft Office 2000 - New Features	FR	Eng.				240 min	20 \$/12 €	30 \$/18 €	40 \$/24 €

# MICROSOFT

## MS OFFICE 2000

CATEGORY/SUBCATEGORY	LANGUAGES					DURATION	PRICE		
	Fr.	Eng.	Spa.	Eng./Fr.	Eng./Dutch		3 months	6 months	12 months
<b>Training for Microsoft Outlook 2000</b>									
Module 1 - Microsoft Outlook 2000	FR	Eng.				200 min	20 \$/12 €	30 \$/18 €	40 \$/24 €
Module 2 - Microsoft Outlook 2000	FR	Eng.				240 min	20 \$/12 €	30 \$/18 €	40 \$/24 €
Module 3 - Microsoft Outlook 2000	FR	Eng.				200 min	20 \$/12 €	30 \$/18 €	40 \$/24 €
<b>Training for Microsoft PowerPoint 2000</b>									
Module 1 - Microsoft PowerPoint 2000	FR	Eng.				240 min	20 \$/12 €	30 \$/18 €	40 \$/24 €
Module 2 - Microsoft PowerPoint 2000	FR	Eng.				220 min	20 \$/12 €	30 \$/18 €	40 \$/24 €
Module 3 - Microsoft PowerPoint 2000 (10 lessons)	FR					220 min	20 \$/12 €	30 \$/18 €	40 \$/24 €
Module 3 - Microsoft PowerPoint 2000 (6 lessons)		Eng.				220 min	12 \$/9.60 €	18 \$/14.40 €	24 \$/19.20 €
<b>Training for Microsoft Word 2000</b>									
Module 1 - Microsoft Word 2000	FR	Eng.				240 min	20 \$/12 €	30 \$/18 €	40 \$/24 €
Module 2 - Microsoft Word 2000	FR	Eng.				240 min	20 \$/12 €	30 \$/18 €	40 \$/24 €
Module 3 - Microsoft Word 2000	FR	Eng.				220 min	20 \$/12 €	30 \$/18 €	40 \$/24 €
Module 4 - Microsoft Word 2000	FR	Eng.				140 min	20 \$/12 €	30 \$/18 €	40 \$/24 €

# MICROSOFT

## MS PROJECT & VISIO

CATEGORY/SUBCATEGORY	LANGUAGES					DURATION	PRICE		
	Fr.	Eng.	Spa.	Eng./Fr.	Eng./Dutch		3 months	6 months	12 months
<b>Training for MS Project 2007</b>									
MS Project 2007 Series		Eng.				960 min	34 \$/26 €	52 \$/39 €	68 \$/52 €
<b>Training for MS Project 2003</b>									
MS Project 2003 Series		Eng.				1800 min	34 \$/26 €	52 \$/39 €	68 \$/52 €
<b>Training for MS Visio 2007</b>									
MS Visio 2007 Series		Eng.				1260 min	34 \$/26 €	52 \$/39 €	68 \$/52 €

# MICROSOFT

## MS WINDOWS

CATEGORY/SUBCATEGORY	LANGUAGES					DURATION	PRICE		
	Fr.	Eng.	Spa.	Eng./Fr.	Eng./Dutch		3 months	6 months	12 months
<b>Training for Microsoft Windows 7</b>									
Module 1 - Microsoft Windows 7	FR					160 min	20 \$/12 €	30 \$/18 €	40 \$/24 €
Module 2 - Microsoft Windows 7	FR					180 min	20 \$/12 €	30 \$/18 €	40 \$/24 €
Module 3 - Microsoft Windows 7	FR					200 min	20 \$/12 €	30 \$/18 €	40 \$/24 €
<b>Training for Microsoft Windows Vista</b>									
Module 1 - Microsoft Windows Vista	FR					140 min	20 \$/12 €	30 \$/18 €	40 \$/24 €
Module 2 - Microsoft Windows Vista	FR					160 min	20 \$/12 €	30 \$/18 €	40 \$/24 €
Module 3 - Microsoft Windows Vista	FR					160 min	20 \$/12 €	30 \$/18 €	40 \$/24 €
<b>Training for MS Windows Vista</b>									
MS Windows Vista Series		Eng.				120 min	34 \$/26 €	52 \$/39 €	68 \$/52 €
<b>Training for Microsoft Windows XP</b>									
Module 1 - Microsoft Windows XP	FR					180 min	20 \$/12 €	30 \$/18 €	40 \$/24 €
Module 2 - Microsoft Windows XP	FR					180 min	20 \$/12 €	30 \$/18 €	40 \$/24 €
Module 3 - Microsoft Windows XP	FR					180 min	20 \$/12 €	30 \$/18 €	40 \$/24 €
<b>Training for MS Windows XP</b>									
Microsoft Windows XP		Eng.				300 min	36 \$/29 €	54 \$/43 €	72 \$/58 €
<b>Training for Microsoft Windows 2000</b>									
Module 1 - Microsoft Windows 2000	FR	Eng.				260 min	20 \$/12 €	30 \$/18 €	40 \$/24 €
Module 2 - Microsoft Windows 2000	FR	Eng.				280 min	20 \$/12 €	30 \$/18 €	40 \$/24 €
Module 3 - Microsoft Windows 2000	FR	Eng.				200 min	20 \$/12 €	30 \$/18 €	40 \$/24 €
<b>Training for Microsoft Windows 98</b>									
Module 1 - Microsoft Windows 98	FR	Eng.				260 min	20 \$/12 €	30 \$/18 €	40 \$/24 €
Module 2 - Microsoft Windows 98	FR	Eng.				240 min	20 \$/12 €	30 \$/18 €	40 \$/24 €
Module 3 - Microsoft Windows 98	FR	Eng.				160 min	20 \$/12 €	30 \$/18 €	40 \$/24 €
Module 4 - Microsoft Windows 98	FR	Eng.				140 min	20 \$/12 €	30 \$/18 €	40 \$/24 €

## MICROSOFT

## MS INTERNET EXPLORER

CATEGORY/SUBCATEGORY	LANGUAGES					DURATION	PRICE		
	Fr.	Eng.	Spa.	Eng./Fr.	Eng./Dutch		3 months	6 months	12 months
<b>Training for MS Internet Explorer 7</b> MS Internet Explorer 7 Series		Eng.				120 min	<b>34 \$/26 €</b>	<b>52 \$/39 €</b>	<b>68 \$/52 €</b>
<b>Training for MS Internet Explorer 6</b> MS Internet Explorer 6 Series		Eng.				360 min	<b>34 \$/26 €</b>	<b>52 \$/39 €</b>	<b>68 \$/52 €</b>
<b>Training for Microsoft Internet Explorer 5</b> Module 1 - Microsoft Internet Explorer 5	FR	Eng.				240 min	<b>20 \$/12 €</b>	<b>30 \$/18 €</b>	<b>40 \$/24 €</b>
Module 2 - Microsoft Internet Explorer 5	FR	Eng.				260 min	<b>20 \$/12 €</b>	<b>30 \$/18 €</b>	<b>40 \$/24 €</b>
Module 3 - Microsoft Internet Explorer 5	FR	Eng.				240 min	<b>20 \$/12 €</b>	<b>30 \$/18 €</b>	<b>40 \$/24 €</b>

## OPENOFFICE.ORG

## OPENOFFICE.ORG VERSION 2.0

CATEGORY/SUBCATEGORY	LANGUAGES					DURATION	PRICE		
	Fr.	Eng.	Spa.	Eng./Fr.	Eng./Dutch		3 months	6 months	12 months
<b>Training for OpenOffice.org Calc 2.0</b> Module 1 - OpenOffice.org Calc 2.0	FR					240 min	<b>20 \$/12 €</b>	<b>30 \$/18 €</b>	<b>40 \$/24 €</b>
Module 2 - OpenOffice.org Calc 2.0	FR					240 min	<b>20 \$/12 €</b>	<b>30 \$/18 €</b>	<b>40 \$/24 €</b>
Module 3 - OpenOffice.org Calc 2.0	FR					240 min	<b>20 \$/12 €</b>	<b>30 \$/18 €</b>	<b>40 \$/24 €</b>
<b>Training for OpenOffice.org Impress 2.0</b> Module 1 - OpenOffice.org Impress 2.0	FR					160 min	<b>20 \$/12 €</b>	<b>30 \$/18 €</b>	<b>40 \$/24 €</b>
Module 2 - OpenOffice.org Impress 2.0	FR					240 min	<b>20 \$/12 €</b>	<b>30 \$/18 €</b>	<b>40 \$/24 €</b>
Module 3 - OpenOffice.org Impress 2.0	FR					240 min	<b>20 \$/12 €</b>	<b>30 \$/18 €</b>	<b>40 \$/24 €</b>
<b>Training for OpenOffice.org Writer 2.0</b> Module 1 - OpenOffice.org Writer 2.0	FR					160 min	<b>20 \$/12 €</b>	<b>30 \$/18 €</b>	<b>40 \$/24 €</b>
Module 2 - OpenOffice.org Writer 2.0	FR					240 min	<b>20 \$/12 €</b>	<b>30 \$/18 €</b>	<b>40 \$/24 €</b>
Module 3 - OpenOffice.org Writer 2.0	FR					220 min	<b>20 \$/12 €</b>	<b>30 \$/18 €</b>	<b>40 \$/24 €</b>

## LOTUS

## LOTUS NOTES

CATEGORY/SUBCATEGORY	LANGUAGES					DURATION	PRICE		
	Fr.	Eng.	Spa.	Eng./Fr.	Eng./Dutch		3 months	6 months	12 months
<b>Training for Lotus Notes 8.5</b> Module 1 - Lotus Notes 8.5	FR					240 min	<b>20 \$/12 €</b>	<b>30 \$/18 €</b>	<b>40 \$/24 €</b>
Module 2 - Lotus Notes 8.5	FR					140 min	<b>20 \$/12 €</b>	<b>30 \$/18 €</b>	<b>40 \$/24 €</b>
Module 3 - Lotus Notes 8.5	FR					220 min	<b>20 \$/12 €</b>	<b>30 \$/18 €</b>	<b>40 \$/24 €</b>
<b>Training for Lotus Notes 7</b> Module 1 - Lotus Notes 7	FR	Eng.				240 min	<b>20 \$/12 €</b>	<b>30 \$/18 €</b>	<b>40 \$/24 €</b>
Module 2 - Lotus Notes 7	FR	Eng.				180 min	<b>20 \$/12 €</b>	<b>30 \$/18 €</b>	<b>40 \$/24 €</b>
Module 3 - Lotus Notes 7	FR	Eng.				240 min	<b>20 \$/12 €</b>	<b>30 \$/18 €</b>	<b>40 \$/24 €</b>
<b>Training for Lotus Notes 6</b> Module 1 - Lotus Notes 6	FR					260 min	<b>20 \$/12 €</b>	<b>30 \$/18 €</b>	<b>40 \$/24 €</b>
Module 2 - Lotus Notes 6	FR					160 min	<b>20 \$/12 €</b>	<b>30 \$/18 €</b>	<b>40 \$/24 €</b>
Module 3 - Lotus Notes 6	FR					240 min	<b>20 \$/12 €</b>	<b>30 \$/18 €</b>	<b>40 \$/24 €</b>
<b>Training for Lotus Notes Client R5 Courier</b> Module 1 - Lotus Notes Client R5 Courier	FR	Eng.				200 min	<b>20 \$/12 €</b>	<b>30 \$/18 €</b>	<b>40 \$/24 €</b>
Module 2 - Lotus Notes Client R5 Courier	FR	Eng.				200 min	<b>20 \$/12 €</b>	<b>30 \$/18 €</b>	<b>40 \$/24 €</b>
Module 3 - Lotus Notes Client R5 Courier	FR	Eng.				200 min	<b>20 \$/12 €</b>	<b>30 \$/18 €</b>	<b>40 \$/24 €</b>



# Practical Evaluations

General training

Microsoft

OpenOffice.org version 2.0

Lotus



## GENERAL TRAINING

2.1

CATEGORY/SUBCATEGORY	LANGUAGES					DURATION			PRICE		
	Fr.	Eng.	Spa.	Eng./Fr.	Eng./Dutch	3 months	6 months	12 months	3 months	6 months	12 months
<b>Training for Informatique Pratique</b>											
Module 1 - Pract. Eval. - Informatique Pratique	FR					120 min			8 \$/4 €	12 \$/6 €	16 \$/8 €
Module 2 - Pract. Eval. - Informatique Pratique	FR					180 min			8 \$/4 €	12 \$/6 €	16 \$/8 €
Module 3 - Pract. Eval. - Informatique Pratique	FR					150 min			8 \$/4 €	12 \$/6 €	16 \$/8 €
<b>Training for Internet Pratique</b>											
Module 1 - Pract. Eval. - Internet Pratique	FR					150 min			8 \$/4 €	12 \$/6 €	16 \$/8 €
Module 2 - Pract. Eval. - Internet Pratique	FR					150 min			8 \$/4 €	12 \$/6 €	16 \$/8 €
Module 3 - Pract. Eval. - Internet Pratique	FR					120 min			8 \$/4 €	12 \$/6 €	16 \$/8 €

## MICROSOFT

MS OFFICE 2010

CATEGORY/SUBCATEGORY	LANGUAGES					DURATION			PRICE		
	Fr.	Eng.	Spa.	Eng./Fr.	Eng./Dutch	3 months	6 months	12 months	3 months	6 months	12 months
<b>Training for Microsoft Word 2010</b>											
Module 1 - Pract. Eval. - Microsoft Word 2010	FR					150 min			8 \$/4 €	12 \$/6 €	16 \$/8 €
Module 2 - Pract. Eval. - Microsoft Word 2010	FR					165 min			8 \$/4 €	12 \$/6 €	16 \$/8 €
Module 3 - Pract. Eval. - Microsoft Word 2010	FR					135 min			8 \$/4 €	12 \$/6 €	16 \$/8 €
Module 4 - Pract. Eval. - Microsoft Word 2010	Coming up										
Module 5 - Pract. Eval. - Microsoft Word 2010	Coming up										
Module 6 - Pract. Eval. - Microsoft Word 2010	Coming up										
<b>Training for Microsoft Excel 2010</b>											
Module 1 - Pract. Eval. - Microsoft Excel 2010	Coming up										
Module 2 - Pract. Eval. - Microsoft Excel 2010	Coming up										
Module 3 - Pract. Eval. - Microsoft Excel 2010	Coming up										
Module 4 - Pract. Eval. - Microsoft Excel 2010	Coming up										
Module 5 - Pract. Eval. - Microsoft Excel 2010	Coming up										
Module 6 - Pract. Eval. - Microsoft Excel 2010	Coming up										
<b>Training for Microsoft Outlook 2010</b>											
Module 1 - Pract. Eval. - Microsoft Outlook 2010	Coming up										
Module 2 - Pract. Eval. - Microsoft Outlook 2010	Coming up										
Module 3 - Pract. Eval. - Microsoft Outlook 2010	Coming up										
Module 4 - Pract. Eval. - Microsoft Outlook 2010	Coming up										
Module 5 - Pract. Eval. - Microsoft Outlook 2010	Coming up										
Module 6 - Pract. Eval. - Microsoft Outlook 2010	Coming up										
<b>Training for Microsoft PowerPoint 2010</b>											
Module 1 - Pract. Eval. - Microsoft PowerPoint 2010	Coming up										
Module 2 - Pract. Eval. - Microsoft PowerPoint 2010	Coming up										
Module 3 - Pract. Eval. - Microsoft PowerPoint 2010	Coming up										
Module 4 - Pract. Eval. - Microsoft PowerPoint 2010	Coming up										
Module 5 - Pract. Eval. - Microsoft PowerPoint 2010	Coming up										
Module 6 - Pract. Eval. - Microsoft PowerPoint 2010	Coming up										

Legend : **no sound** Course outline different from the French version

# MICROSOFT

## MS OFFICE 2010

CATEGORY/SUBCATEGORY	LANGUAGES					DURATION			PRICE		
	Fr.	Eng.	Spa.	Eng./Fr.	Eng./Dutch	3 months	6 months	12 months	3 months	6 months	12 months

### Training for Microsoft Access 2010

Module 1 - Pract. Eval. - Microsoft Access 2010	Coming up
Module 2 - Pract. Eval. - Microsoft Access 2010	Coming up
Module 3 - Pract. Eval. - Microsoft Access 2010	Coming up
Module 4 - Pract. Eval. - Microsoft Access 2010	Coming up
Module 5 - Pract. Eval. - Microsoft Access 2010	Coming up
Module 6 - Pract. Eval. - Microsoft Access 2010	Coming up

### Training for Upgrade 2007-2010

Module 1 - Pract. Eval. - Upgrade 2007-2010	FR	120 min	8 \$/4 €	12 \$/6 €	16 \$/8 €
Module 2 - Pract. Eval. - Upgrade 2007-2010	FR	120 min	8 \$/4 €	12 \$/6 €	16 \$/8 €

# MICROSOFT

## MS OFFICE 2007

CATEGORY/SUBCATEGORY	LANGUAGES					DURATION			PRICE		
	Fr.	Eng.	Spa.	Eng./Fr.	Eng./Dutch	3 months	6 months	12 months	3 months	6 months	12 months

### Training for Microsoft Access 2007

Module 1 - Pract. Eval. - Microsoft Access 2007	FR	150 min	8 \$/4 €	12 \$/6 €	16 \$/8 €
Module 2 - Pract. Eval. - Microsoft Access 2007	FR	135 min	8 \$/4 €	12 \$/6 €	16 \$/8 €
Module 3 - Pract. Eval. - Microsoft Access 2007	FR	90 min	8 \$/4 €	12 \$/6 €	16 \$/8 €
Module 4 - Pract. Eval. - Microsoft Access 2007	FR	225 min	8 \$/4 €	12 \$/6 €	16 \$/8 €
Module 5 - Pract. Eval. - Microsoft Access 2007	FR	135 min	8 \$/4 €	12 \$/6 €	16 \$/8 €
Module 6 - Pract. Eval. - Microsoft Access 2007	FR	135 min	8 \$/4 €	12 \$/6 €	16 \$/8 €

### Training for Microsoft Excel 2007

Module 1 - Pract. Eval. - Microsoft Excel 2007	FR	165 min	8 \$/4 €	12 \$/6 €	16 \$/8 €
Module 2 - Pract. Eval. - Microsoft Excel 2007	FR	195 min	8 \$/4 €	12 \$/6 €	16 \$/8 €
Module 3 - Pract. Eval. - Microsoft Excel 2007	FR	150 min	8 \$/4 €	12 \$/6 €	16 \$/8 €
Module 4 - Pract. Eval. - Microsoft Excel 2007	FR	180 min	8 \$/4 €	12 \$/6 €	16 \$/8 €
Module 5 - Pract. Eval. - Microsoft Excel 2007	FR	165 min	8 \$/4 €	12 \$/6 €	16 \$/8 €
Module 6 - Pract. Eval. - Microsoft Excel 2007	FR	165 min	8 \$/4 €	12 \$/6 €	16 \$/8 €

### Training for Microsoft Outlook 2007

Module 1 - Pract. Eval. - Microsoft Outlook 2007	FR	135 min	8 \$/4 €	12 \$/6 €	16 \$/8 €
Module 2 - Pract. Eval. - Microsoft Outlook 2007	FR	120 min	8 \$/4 €	12 \$/6 €	16 \$/8 €
Module 3 - Pract. Eval. - Microsoft Outlook 2007	FR	90 min	8 \$/4 €	12 \$/6 €	16 \$/8 €
Module 4 - Pract. Eval. - Microsoft Outlook 2007	FR	135 min	8 \$/4 €	12 \$/6 €	16 \$/8 €
Module 5 - Pract. Eval. - Microsoft Outlook 2007	FR	90 min	8 \$/4 €	12 \$/6 €	16 \$/8 €
Module 6 - Pract. Eval. - Microsoft Outlook 2007	FR	75 min	8 \$/4 €	12 \$/6 €	16 \$/8 €

### Training for Microsoft PowerPoint 2007

Module 1 - Pract. Eval. - Microsoft PowerPoint 2007	FR	120 min	8 \$/4 €	12 \$/6 €	16 \$/8 €
Module 2 - Pract. Eval. - Microsoft PowerPoint 2007	FR	105 min	8 \$/4 €	12 \$/6 €	16 \$/8 €
Module 3 - Pract. Eval. - Microsoft PowerPoint 2007	FR	150 min	8 \$/4 €	12 \$/6 €	16 \$/8 €
Module 4 - Pract. Eval. - Microsoft PowerPoint 2007	FR	120 min	8 \$/4 €	12 \$/6 €	16 \$/8 €
Module 5 - Pract. Eval. - Microsoft PowerPoint 2007	FR	75 min	8 \$/4 €	12 \$/6 €	16 \$/8 €
Module 6 - Pract. Eval. - Microsoft PowerPoint 2007	FR	75 min	8 \$/4 €	12 \$/6 €	16 \$/8 €

### Training for Microsoft Word 2007

Module 1 - Pract. Eval. - Microsoft Word 2007	FR	150 min	8 \$/4 €	12 \$/6 €	16 \$/8 €
Module 2 - Pract. Eval. - Microsoft Word 2007	FR	165 min	8 \$/4 €	12 \$/6 €	16 \$/8 €
Module 3 - Pract. Eval. - Microsoft Word 2007	FR	135 min	8 \$/4 €	12 \$/6 €	16 \$/8 €
Module 4 - Pract. Eval. - Microsoft Word 2007	FR	165 min	8 \$/4 €	12 \$/6 €	16 \$/8 €
Module 5 - Pract. Eval. - Microsoft Word 2007	FR	150 min	8 \$/4 €	12 \$/6 €	16 \$/8 €
Module 6 - Pract. Eval. - Microsoft Word 2007	FR	180 min	8 \$/4 €	12 \$/6 €	16 \$/8 €

# MICROSOFT

## MS OFFICE 2003

2.2

CATEGORY/SUBCATEGORY	LANGUAGES					DURATION	PRICE		
	Fr.	Eng.	Spa.	Eng./Fr.	Eng./Dutch		3 months	6 months	12 months
<b>Training for Microsoft Access 2003</b>									
Module 1 - Pract. Eval. - Microsoft Access 2003	FR					150 min	8 \$/4 €	12 \$/6 €	16 \$/8 €
Module 2 - Pract. Eval. - Microsoft Access 2003	FR					120 min	8 \$/4 €	12 \$/6 €	16 \$/8 €
Module 3 - Pract. Eval. - Microsoft Access 2003	FR					90 min	8 \$/4 €	12 \$/6 €	16 \$/8 €
Module 4 - Pract. Eval. - Microsoft Access 2003	FR					210 min	8 \$/4 €	12 \$/6 €	16 \$/8 €
Module 5 - Pract. Eval. - Microsoft Access 2003	FR					120 min	8 \$/4 €	12 \$/6 €	16 \$/8 €
Module 6 - Pract. Eval. - Microsoft Access 2003	FR					135 min	8 \$/4 €	12 \$/6 €	16 \$/8 €
<b>Training for Microsoft Excel 2003</b>									
Module 1 - Pract. Eval. - Microsoft Excel 2003	FR					180 min	8 \$/4 €	12 \$/6 €	16 \$/8 €
Module 2 - Pract. Eval. - Microsoft Excel 2003	FR					180 min	8 \$/4 €	12 \$/6 €	16 \$/8 €
Module 3 - Pract. Eval. - Microsoft Excel 2003	FR					180 min	8 \$/4 €	12 \$/6 €	16 \$/8 €
Module 4 - Pract. Eval. - Microsoft Excel 2003	FR					180 min	8 \$/4 €	12 \$/6 €	16 \$/8 €
Module 5 - Pract. Eval. - Microsoft Excel 2003	FR					150 min	8 \$/4 €	12 \$/6 €	16 \$/8 €
Module 6 - Pract. Eval. - Microsoft Excel 2003	FR					180 min	8 \$/4 €	12 \$/6 €	16 \$/8 €
<b>Training for Microsoft Excel 2003</b>									
Module 1 - Pract. Eval. - Microsoft Excel 2003				no sound	no sound	135 min	8 \$/4 €	12 \$/6 €	16 \$/8 €
Module 2 - Pract. Eval. - Microsoft Excel 2003				no sound	no sound	120 min	8 \$/4 €	12 \$/6 €	16 \$/8 €
Module 3 - Pract. Eval. - Microsoft Excel 2003				no sound	no sound	60 min	8 \$/4 €	12 \$/6 €	16 \$/8 €
Module 3+ - Pract. Eval. - Microsoft Excel 2003				no sound	no sound	75 min	8 \$/4 €	12 \$/6 €	16 \$/8 €
<b>Training for Microsoft Outlook 2003</b>									
Module 1 - Pract. Eval. - Microsoft Outlook 2003	FR					135 min	8 \$/4 €	12 \$/6 €	16 \$/8 €
Module 2 - Pract. Eval. - Microsoft Outlook 2003	FR					120 min	8 \$/4 €	12 \$/6 €	16 \$/8 €
Module 3 - Pract. Eval. - Microsoft Outlook 2003	FR					90 min	8 \$/4 €	12 \$/6 €	16 \$/8 €
Module 4 - Pract. Eval. - Microsoft Outlook 2003	FR					135 min	8 \$/4 €	12 \$/6 €	16 \$/8 €
Module 5 - Pract. Eval. - Microsoft Outlook 2003	FR					90 min	8 \$/4 €	12 \$/6 €	16 \$/8 €
Module 6 - Pract. Eval. - Microsoft Outlook 2003	FR					75 min	8 \$/4 €	12 \$/6 €	16 \$/8 €
<b>Training for Microsoft Outlook 2003</b>									
Module 1 - Pract. Eval. - Microsoft Outlook 2003				no sound	no sound	120 min	8 \$/4 €	12 \$/6 €	16 \$/8 €
Module 2 - Pract. Eval. - Microsoft Outlook 2003				no sound	no sound	105 min	8 \$/4 €	12 \$/6 €	16 \$/8 €
Module 3 - Pract. Eval. - Microsoft Outlook 2003				no sound	no sound	60 min	8 \$/4 €	12 \$/6 €	16 \$/8 €
Module 3+ - Pract. Eval. - Microsoft Outlook 2003				no sound	no sound	180 min	8 \$/4 €	12 \$/6 €	16 \$/8 €
<b>Training for Microsoft PowerPoint 2003</b>									
Module 1 - Pract. Eval. - Microsoft PowerPoint 2003	FR					120 min	8 \$/4 €	12 \$/6 €	16 \$/8 €
Module 2 - Pract. Eval. - Microsoft PowerPoint 2003	FR					90 min	8 \$/4 €	12 \$/6 €	16 \$/8 €
Module 3 - Pract. Eval. - Microsoft PowerPoint 2003	FR					120 min	8 \$/4 €	12 \$/6 €	16 \$/8 €
Module 4 - Pract. Eval. - Microsoft PowerPoint 2003	FR					120 min	8 \$/4 €	12 \$/6 €	16 \$/8 €
Module 5 - Pract. Eval. - Microsoft PowerPoint 2003	FR					60 min	8 \$/4 €	12 \$/6 €	16 \$/8 €
Module 6 - Pract. Eval. - Microsoft PowerPoint 2003	FR					120 min	8 \$/4 €	12 \$/6 €	16 \$/8 €
<b>Training for Microsoft PowerPoint 2003</b>									
Module 1 - Pract. Eval. - Microsoft PowerPoint 2003				no sound	no sound	135 min	8 \$/4 €	12 \$/6 €	16 \$/8 €
Module 2 - Pract. Eval. - Microsoft PowerPoint 2003				no sound	no sound	75 min	8 \$/4 €	12 \$/6 €	16 \$/8 €
Module 3 - Pract. Eval. - Microsoft PowerPoint 2003				no sound	no sound	120 min	8 \$/4 €	12 \$/6 €	16 \$/8 €
Module 3+ - Pract. Eval. - Microsoft PowerPoint 2003				no sound	no sound	60 min	8 \$/4 €	12 \$/6 €	16 \$/8 €
<b>Training for Microsoft Word 2003</b>									
Module 1 - Pract. Eval. - Microsoft Word 2003	FR					135 min	8 \$/4 €	12 \$/6 €	16 \$/8 €
Module 2 - Pract. Eval. - Microsoft Word 2003	FR					150 min	8 \$/4 €	12 \$/6 €	16 \$/8 €
Module 3 - Pract. Eval. - Microsoft Word 2003	FR					150 min	8 \$/4 €	12 \$/6 €	16 \$/8 €
Module 4 - Pract. Eval. - Microsoft Word 2003	FR					150 min	8 \$/4 €	12 \$/6 €	16 \$/8 €
Module 5 - Pract. Eval. - Microsoft Word 2003	FR					150 min	8 \$/4 €	12 \$/6 €	16 \$/8 €
Module 6 - Pract. Eval. - Microsoft Word 2003	FR					180 min	8 \$/4 €	12 \$/6 €	16 \$/8 €
<b>Training for Microsoft Word 2003</b>									
Module 1 - Pract. Eval. - Microsoft Word 2003				no sound	no sound	120 min	8 \$/4 €	12 \$/6 €	16 \$/8 €
Module 2 - Pract. Eval. - Microsoft Word 2003				no sound	no sound	120 min	8 \$/4 €	12 \$/6 €	16 \$/8 €
Module 3 - Pract. Eval. - Microsoft Word 2003				no sound	no sound	90 min	8 \$/4 €	12 \$/6 €	16 \$/8 €
Module 3+ - Pract. Eval. - Microsoft Word 2003				no sound	no sound	90 min	8 \$/4 €	12 \$/6 €	16 \$/8 €

Legend : **no sound** Course outline different from the French version

CATEGORY/SUBCATEGORY	LANGUAGES					DURATION	PRICE		
	Fr.	Eng.	Spa.	Eng./Fr.	Eng./Dutch		3 months	6 months	12 months
<b>Training for Microsoft Access 2002</b>									
Module 1 - Pract. Eval. - Microsoft Access 2002	FR					150 min	8 \$/4 €	12 \$/6 €	16 \$/8 €
Module 2 - Pract. Eval. - Microsoft Access 2002	FR					120 min	8 \$/4 €	12 \$/6 €	16 \$/8 €
Module 3 - Pract. Eval. - Microsoft Access 2002	FR					90 min	8 \$/4 €	12 \$/6 €	16 \$/8 €
Module 4 - Pract. Eval. - Microsoft Access 2002	FR					195 min	8 \$/4 €	12 \$/6 €	16 \$/8 €
Module 5 - Pract. Eval. - Microsoft Access 2002	FR					120 min	8 \$/4 €	12 \$/6 €	16 \$/8 €
Module 6 - Pract. Eval. - Microsoft Access 2002	FR					135 min	8 \$/4 €	12 \$/6 €	16 \$/8 €
<b>Training for Microsoft Excel 2002</b>									
Module 1 - Pract. Eval. - Microsoft Excel 2002	FR	Eng.				150 min	8 \$/4 €	12 \$/6 €	16 \$/8 €
Module 2 - Pract. Eval. - Microsoft Excel 2002	FR	Eng.				150 min	8 \$/4 €	12 \$/6 €	16 \$/8 €
Module 3 - Pract. Eval. - Microsoft Excel 2002	FR	Eng.				120 min	8 \$/4 €	12 \$/6 €	16 \$/8 €
Module 4 - Pract. Eval. - Microsoft Excel 2002	FR	Eng.				180 min	8 \$/4 €	12 \$/6 €	16 \$/8 €
Module 5 - Pract. Eval. - Microsoft Excel 2002	FR	Eng.				135 min	8 \$/4 €	12 \$/6 €	16 \$/8 €
Module 6 - Pract. Eval. - Microsoft Excel 2002	FR	Eng.				150 min	8 \$/4 €	12 \$/6 €	16 \$/8 €
<b>Training for Microsoft Excel 2002</b>									
Module 1 - Pract. Eval. - Microsoft Excel 2002				no sound	no sound	150 min	8 \$/4 €	12 \$/6 €	16 \$/8 €
Module 2 - Pract. Eval. - Microsoft Excel 2002				no sound	no sound	120 min	8 \$/4 €	12 \$/6 €	16 \$/8 €
Module 3 - Pract. Eval. - Microsoft Excel 2002				no sound	no sound	60 min	8 \$/4 €	12 \$/6 €	16 \$/8 €
Module 3+ - Pract. Eval. - Microsoft Excel 2002				no sound	no sound	90 min	8 \$/4 €	12 \$/6 €	16 \$/8 €
<b>Training for Microsoft Excel 2002</b>									
Microsoft Excel 2002 - Pract. Eval. - New Features	FR					90 min	8 \$/4 €	12 \$/6 €	16 \$/8 €
<b>Training for Microsoft Outlook 2002</b>									
Module 1 - Pract. Eval. - Microsoft Outlook 2002	FR					135 min	8 \$/4 €	12 \$/6 €	16 \$/8 €
Module 2 - Pract. Eval. - Microsoft Outlook 2002	FR					120 min	8 \$/4 €	12 \$/6 €	16 \$/8 €
Module 3 - Pract. Eval. - Microsoft Outlook 2002	FR					90 min	8 \$/4 €	12 \$/6 €	16 \$/8 €
Module 4 - Pract. Eval. - Microsoft Outlook 2002	FR					135 min	8 \$/4 €	12 \$/6 €	16 \$/8 €
Module 5 - Pract. Eval. - Microsoft Outlook 2002	FR					90 min	8 \$/4 €	12 \$/6 €	16 \$/8 €
Module 6 - Pract. Eval. - Microsoft Outlook 2002	FR					75 min	8 \$/4 €	12 \$/6 €	16 \$/8 €
<b>Training for Microsoft PowerPoint 2002</b>									
Module 1 - Pract. Eval. - Microsoft PowerPoint 2002	FR	Eng.				135 min	8 \$/4 €	12 \$/6 €	16 \$/8 €
Module 2 - Pract. Eval. - Microsoft PowerPoint 2002	FR	Eng.				105 min	8 \$/4 €	12 \$/6 €	16 \$/8 €
Module 3 - Pract. Eval. - Microsoft PowerPoint 2002	FR	Eng.				120 min	8 \$/4 €	12 \$/6 €	16 \$/8 €
Module 4 - Pract. Eval. - Microsoft PowerPoint 2002	FR	Eng.				105 min	8 \$/4 €	12 \$/6 €	16 \$/8 €
Module 5 - Pract. Eval. - Microsoft PowerPoint 2002	FR	Eng.				75 min	8 \$/4 €	12 \$/6 €	16 \$/8 €
Module 6 - Pract. Eval. - Microsoft PowerPoint 2002	FR	Eng.				135 min	8 \$/4 €	12 \$/6 €	16 \$/8 €
<b>Training for Microsoft PowerPoint 2002</b>									
Module 1 - Pract. Eval. - Microsoft PowerPoint 2002				no sound	no sound	135 min	8 \$/4 €	12 \$/6 €	16 \$/8 €
Module 2 - Pract. Eval. - Microsoft PowerPoint 2002				no sound	no sound	75 min	8 \$/4 €	12 \$/6 €	16 \$/8 €
Module 3 - Pract. Eval. - Microsoft PowerPoint 2002				no sound	no sound	120 min	8 \$/4 €	12 \$/6 €	16 \$/8 €
Module 3+ - Pract. Eval. - Microsoft PowerPoint 2002				no sound	no sound	60 min	8 \$/4 €	12 \$/6 €	16 \$/8 €
<b>Training for Microsoft Word 2002</b>									
Module 1 - Pract. Eval. - Microsoft Word 2002	FR	Eng.				120 min	8 \$/4 €	12 \$/6 €	16 \$/8 €
Module 2 - Pract. Eval. - Microsoft Word 2002	FR	Eng.				150 min	8 \$/4 €	12 \$/6 €	16 \$/8 €
Module 3 - Pract. Eval. - Microsoft Word 2002	FR	Eng.				120 min	8 \$/4 €	12 \$/6 €	16 \$/8 €
Module 4 - Pract. Eval. - Microsoft Word 2002	FR	Eng.				120 min	8 \$/4 €	12 \$/6 €	16 \$/8 €
Module 5 - Pract. Eval. - Microsoft Word 2002	FR	Eng.				105 min	8 \$/4 €	12 \$/6 €	16 \$/8 €
Module 6 - Pract. Eval. - Microsoft Word 2002	FR	Eng.				135 min	8 \$/4 €	12 \$/6 €	16 \$/8 €
<b>Training for Microsoft Word 2002</b>									
Module 1 - Pract. Eval. - Microsoft Word 2002				no sound	no sound	105 min	8 \$/4 €	12 \$/6 €	16 \$/8 €
Module 2 - Pract. Eval. - Microsoft Word 2002				no sound	no sound	120 min	8 \$/4 €	12 \$/6 €	16 \$/8 €
Module 3 - Pract. Eval. - Microsoft Word 2002				no sound	no sound	90 min	8 \$/4 €	12 \$/6 €	16 \$/8 €
Module 3+ - Pract. Eval. - Microsoft Word 2002				no sound	no sound	90 min	8 \$/4 €	12 \$/6 €	16 \$/8 €
<b>Training for Microsoft Word 2002</b>									
Microsoft Word 2002 - Pract. Eval. - New Features	FR					75 min	8 \$/4 €	12 \$/6 €	16 \$/8 €

## MICROSOFT

## MS OFFICE 2000

CATEGORY/SUBCATEGORY	LANGUAGES					DURATION	PRICE		
	Fr.	Eng.	Spa.	Eng./Fr.	Eng./Dutch		3 months	6 months	12 months
<b>Training for Microsoft Access 2000</b>									
Module 1 - Pract. Eval. - Microsoft Access 2000	FR	Eng.				150 min	8 \$/4 €	12 \$/6 €	16 \$/8 €
Module 2 - Pract. Eval. - Microsoft Access 2000	FR	Eng.				120 min	8 \$/4 €	12 \$/6 €	16 \$/8 €
Module 3 - Pract. Eval. - Microsoft Access 2000	FR	Eng.				120 min	8 \$/4 €	12 \$/6 €	16 \$/8 €
<b>Training for Microsoft Excel 2000</b>									
Module 1 - Pract. Eval. - Microsoft Excel 2000	FR	Eng.				165 min	8 \$/4 €	12 \$/6 €	16 \$/8 €
Module 2 - Pract. Eval. - Microsoft Excel 2000	FR	Eng.				150 min	8 \$/4 €	12 \$/6 €	16 \$/8 €
Module 3 - Pract. Eval. - Microsoft Excel 2000	FR	Eng.				180 min	8 \$/4 €	12 \$/6 €	16 \$/8 €
<b>Training for Microsoft Office 2000</b>									
Microsoft Office 2000 - Pract. Eval. - New Features	FR	Eng.				165 min	8 \$/4 €	12 \$/6 €	16 \$/8 €
<b>Training for Microsoft Outlook 2000</b>									
Module 1 - Pract. Eval. - Microsoft Outlook 2000	FR	Eng.				135 min	8 \$/4 €	12 \$/6 €	16 \$/8 €
Module 2 - Pract. Eval. - Microsoft Outlook 2000	FR	Eng.				165 min	8 \$/4 €	12 \$/6 €	16 \$/8 €
Module 3 - Pract. Eval. - Microsoft Outlook 2000	FR	Eng.				135 min	8 \$/4 €	12 \$/6 €	16 \$/8 €
<b>Training for Microsoft PowerPoint 2000</b>									
Module 1 - Pract. Eval. - Microsoft PowerPoint 2000	FR	Eng.				165 min	8 \$/4 €	12 \$/6 €	16 \$/8 €
Module 2 - Pract. Eval. - Microsoft PowerPoint 2000	FR	Eng.				150 min	8 \$/4 €	12 \$/6 €	16 \$/8 €
Module 3 - Pract. Eval. - Microsoft PowerPoint 2000	FR	Eng.				150 min	8 \$/4 €	12 \$/6 €	16 \$/8 €
<b>Training for Microsoft Word 2000</b>									
Module 1 - Pract. Eval. - Microsoft Word 2000	FR	Eng.				165 min	8 \$/4 €	12 \$/6 €	16 \$/8 €
Module 2 - Pract. Eval. - Microsoft Word 2000	FR	Eng.				165 min	8 \$/4 €	12 \$/6 €	16 \$/8 €
Module 3 - Pract. Eval. - Microsoft Word 2000	FR	Eng.				150 min	8 \$/4 €	12 \$/6 €	16 \$/8 €
Module 4 - Pract. Eval. - Microsoft Word 2000	FR	Eng.				90 min	8 \$/4 €	12 \$/6 €	16 \$/8 €

## MICROSOFT

## MS WINDOWS

CATEGORY/SUBCATEGORY	LANGUAGES					DURATION	PRICE		
	Fr.	Eng.	Spa.	Eng./Fr.	Eng./Dutch		3 months	6 months	12 months
<b>Training for Microsoft Windows 7</b>									
Module 1 - Pract. Eval. - Microsoft Windows 7		Coming up							
Module 2 - Pract. Eval. - Microsoft Windows 7		Coming up							
Module 3 - Pract. Eval. - Microsoft Windows 7		Coming up							
<b>Training for Microsoft Windows Vista</b>									
Module 1 - Pract. Eval. - Microsoft Windows Vista	FR					105 min	8 \$/4 €	12 \$/6 €	16 \$/8 €
Module 2 - Pract. Eval. - Microsoft Windows Vista	FR					120 min	8 \$/4 €	12 \$/6 €	16 \$/8 €
Module 3 - Pract. Eval. - Microsoft Windows Vista	FR					120 min	8 \$/4 €	12 \$/6 €	16 \$/8 €
<b>Training for Microsoft Windows XP</b>									
Module 1 - Pract. Eval. - Microsoft Windows XP	FR					120 min	8 \$/4 €	12 \$/6 €	16 \$/8 €
Module 2 - Pract. Eval. - Microsoft Windows XP	FR					120 min	8 \$/4 €	12 \$/6 €	16 \$/8 €
Module 3 - Pract. Eval. - Microsoft Windows XP	FR					120 min	8 \$/4 €	12 \$/6 €	16 \$/8 €
<b>Training for Microsoft Windows 2000</b>									
Module 1 - Pract. Eval. - Microsoft Windows 2000	FR	Eng.				180 min	8 \$/4 €	12 \$/6 €	16 \$/8 €
Module 2 - Pract. Eval. - Microsoft Windows 2000	FR	Eng.				195 min	8 \$/4 €	12 \$/6 €	16 \$/8 €
Module 3 - Pract. Eval. - Microsoft Windows 2000	FR	Eng.				135 min	8 \$/4 €	12 \$/6 €	16 \$/8 €
<b>Training for Microsoft Windows 98</b>									
Module 1 - Pract. Eval. - Microsoft Windows 98	FR	Eng.				180 min	8 \$/4 €	12 \$/6 €	16 \$/8 €
Module 2 - Pract. Eval. - Microsoft Windows 98	FR	Eng.				165 min	8 \$/4 €	12 \$/6 €	16 \$/8 €
Module 3 - Pract. Eval. - Microsoft Windows 98	FR	Eng.				105 min	8 \$/4 €	12 \$/6 €	16 \$/8 €
Module 4 - Pract. Eval. - Microsoft Windows 98	FR	Eng.				90 min	8 \$/4 €	12 \$/6 €	16 \$/8 €

# MICROSOFT

## MS INTERNET EXPLORER

CATEGORY/SUBCATEGORY	LANGUAGES					DURATION	PRICE		
	Fr.	Eng.	Spa.	Eng./Fr.	Eng./Dutch		3 months	6 months	12 months

### Training for Microsoft Internet Explorer 5

Module 1 - Pract. Eval. - Microsoft Internet Explorer 5	FR	Eng.				165 min	8 \$/4 €	12 \$/6 €	16 \$/8 €
Module 2 - Pract. Eval. - Microsoft Internet Explorer 5	FR	Eng.				180 min	8 \$/4 €	12 \$/6 €	16 \$/8 €
Module 3 - Pract. Eval. - Microsoft Internet Explorer 5	FR	Eng.				165 min	8 \$/4 €	12 \$/6 €	16 \$/8 €

# OPENOFFICE.ORG

## OPENOFFICE.ORG VERSION 2.0

CATEGORY/SUBCATEGORY	LANGUAGES					DURATION	PRICE		
	Fr.	Eng.	Spa.	Eng./Fr.	Eng./Dutch		3 months	6 months	12 months

### Training for OpenOffice.org Calc 2.0

Module 1 - Pract. Eval. - OpenOffice.org Calc 2.0	FR					180 min	8 \$/4 €	12 \$/6 €	16 \$/8 €
Module 2 - Pract. Eval. - OpenOffice.org Calc 2.0	FR					180 min	8 \$/4 €	12 \$/6 €	16 \$/8 €
Module 3 - Pract. Eval. - OpenOffice.org Calc 2.0	FR					180 min	8 \$/4 €	12 \$/6 €	16 \$/8 €

### Training for OpenOffice.org Impress 2.0

Module 1 - Pract. Eval. - OpenOffice.org Impress 2.0	FR					120 min	8 \$/4 €	12 \$/6 €	16 \$/8 €
Module 2 - Pract. Eval. - OpenOffice.org Impress 2.0	FR					180 min	8 \$/4 €	12 \$/6 €	16 \$/8 €
Module 3 - Pract. Eval. - OpenOffice.org Impress 2.0	FR					150 min	8 \$/4 €	12 \$/6 €	16 \$/8 €

### Training for OpenOffice.org Writer 2.0

Module 1 - Pract. Eval. - OpenOffice.org Writer 2.0	FR					180 min	8 \$/4 €	12 \$/6 €	16 \$/8 €
Module 2 - Pract. Eval. - OpenOffice.org Writer 2.0	FR					180 min	8 \$/4 €	12 \$/6 €	16 \$/8 €
Module 3 - Pract. Eval. - OpenOffice.org Writer 2.0	FR					165 min	8 \$/4 €	12 \$/6 €	16 \$/8 €

# LOTUS

## LOTUS NOTES

CATEGORY/SUBCATEGORY	LANGUAGES					DURATION	PRICE		
	Fr.	Eng.	Spa.	Eng./Fr.	Eng./Dutch		3 months	6 months	12 months

### Training for Lotus Notes 8.5

Module 1 - Pract. Eval. - Lotus Notes 8.5	FR					180 min	8 \$/4 €	12 \$/6 €	16 \$/8 €
Module 2 - Pract. Eval. - Lotus Notes 8.5	FR					105 min	8 \$/4 €	12 \$/6 €	16 \$/8 €
Module 3 - Pract. Eval. - Lotus Notes 8.5	FR					165 min	8 \$/4 €	12 \$/6 €	16 \$/8 €

### Training for Lotus Notes 7

Module 1 - Pract. Eval. - Lotus Notes 7	FR	Eng.				180 min	8 \$/4 €	12 \$/6 €	16 \$/8 €
Module 2 - Pract. Eval. - Lotus Notes 7	FR	Eng.				105 min	8 \$/4 €	12 \$/6 €	16 \$/8 €
Module 3 - Pract. Eval. - Lotus Notes 7	FR	Eng.				165 min	8 \$/4 €	12 \$/6 €	16 \$/8 €

### Training for Lotus Notes 6

Module 1 - Pract. Eval. - Lotus Notes 6	FR					180 min	8 \$/4 €	12 \$/6 €	16 \$/8 €
Module 2 - Pract. Eval. - Lotus Notes 6	FR					105 min	8 \$/4 €	12 \$/6 €	16 \$/8 €
Module 3 - Pract. Eval. - Lotus Notes 6	FR					165 min	8 \$/4 €	12 \$/6 €	16 \$/8 €

### Training for Lotus Notes Client R5 Courier

Module 1 - Pract. Eval. - Lotus Notes Client R5 Courier	FR	Eng.				135 min	8 \$/4 €	12 \$/6 €	16 \$/8 €
Module 2 - Pract. Eval. - Lotus Notes Client R5 Courier	FR	Eng.				135 min	8 \$/4 €	12 \$/6 €	16 \$/8 €
Module 3 - Pract. Eval. - Lotus Notes Client R5 Courier	FR	Eng.				135 min	8 \$/4 €	12 \$/6 €	16 \$/8 €

# Theoretical Evaluations

General training

Microsoft

OpenOffice.org version 2.0

Lotus



## GENERAL TRAINING

3.1

CATEGORY/SUBCATEGORY	LANGUAGES					DURATION			PRICE		
	Fr.	Eng.	Spa.	Eng./Fr.	Eng./Dutch	3 months	6 months	12 months	3 months	6 months	12 months
<b>Training for Informatique Pratique</b>											
Module 1 - Theor. Eval. - Informatique Pratique	FR					15 min			4 \$/2 €	6 \$/3 €	8 \$/6 €
Module 2 - Theor. Eval. - Informatique Pratique	FR					15 min			4 \$/2 €	6 \$/3 €	8 \$/6 €
Module 3 - Theor. Eval. - Informatique Pratique	FR					15 min			4 \$/2 €	6 \$/3 €	8 \$/6 €
<b>Training for Internet Pratique</b>											
Module 1 - Theor. Eval. - Internet Pratique	FR					15 min			4 \$/2 €	6 \$/3 €	8 \$/6 €
Module 2 - Theor. Eval. - Internet Pratique	FR					15 min			4 \$/2 €	6 \$/3 €	8 \$/6 €
Module 3 - Theor. Eval. - Internet Pratique	FR					15 min			4 \$/2 €	6 \$/3 €	8 \$/6 €

## MICROSOFT

MS OFFICE 2010

CATEGORY/SUBCATEGORY	LANGUAGES					DURATION			PRICE		
	Fr.	Eng.	Spa.	Eng./Fr.	Eng./Dutch	3 months	6 months	12 months	3 months	6 months	12 months
<b>Training for Microsoft Word 2010</b>											
Module 1 - Theor. Eval. - Microsoft Word 2010	FR					15 min			4 \$/2 €	6 \$/3 €	8 \$/6 €
Module 2 - Theor. Eval. - Microsoft Word 2010	FR					15 min			4 \$/2 €	6 \$/3 €	8 \$/6 €
Module 3 - Theor. Eval. - Microsoft Word 2010	FR					15 min			4 \$/2 €	6 \$/3 €	8 \$/6 €
Module 4 - Theor. Eval. - Microsoft Word 2010	Coming up										
Module 5 - Theor. Eval. - Microsoft Word 2010	Coming up										
Module 6 - Theor. Eval. - Microsoft Word 2010	Coming up										
<b>Training for Microsoft Excel 2010</b>											
Module 1 - Theor. Eval. - Microsoft Excel 2010	Coming up										
Module 2 - Theor. Eval. - Microsoft Excel 2010	Coming up										
Module 3 - Theor. Eval. - Microsoft Excel 2010	Coming up										
Module 4 - Theor. Eval. - Microsoft Excel 2010	Coming up										
Module 5 - Theor. Eval. - Microsoft Excel 2010	Coming up										
Module 6 - Theor. Eval. - Microsoft Excel 2010	Coming up										
<b>Training for Microsoft Outlook 2010</b>											
Module 1 - Theor. Eval. - Microsoft Outlook 2010	Coming up										
Module 2 - Theor. Eval. - Microsoft Outlook 2010	Coming up										
Module 3 - Theor. Eval. - Microsoft Outlook 2010	Coming up										
Module 4 - Theor. Eval. - Microsoft Outlook 2010	Coming up										
Module 5 - Theor. Eval. - Microsoft Outlook 2010	Coming up										
Module 6 - Theor. Eval. - Microsoft Outlook 2010	Coming up										
<b>Training for Microsoft PowerPoint 2010</b>											
Module 1 - Theor. Eval. - Microsoft PowerPoint 2010	Coming up										
Module 2 - Theor. Eval. - Microsoft PowerPoint 2010	Coming up										
Module 3 - Theor. Eval. - Microsoft PowerPoint 2010	Coming up										
Module 4 - Theor. Eval. - Microsoft PowerPoint 2010	Coming up										
Module 5 - Theor. Eval. - Microsoft PowerPoint 2010	Coming up										
Module 6 - Theor. Eval. - Microsoft PowerPoint 2010	Coming up										

Legend : Course outline different from the French version

# MICROSOFT

## MS OFFICE 2010

CATEGORY/SUBCATEGORY	LANGUAGES					DURATION			PRICE		
	Fr.	Eng.	Spa.	Eng./Fr.	Eng./Dutch	3 months	6 months	12 months	3 months	6 months	12 months

### Training for Microsoft Access 2010

Module 1 - Theor. Eval. - Microsoft Access 2010	Coming up
Module 2 - Theor. Eval. - Microsoft Access 2010	Coming up
Module 3 - Theor. Eval. - Microsoft Access 2010	Coming up
Module 4 - Theor. Eval. - Microsoft Access 2010	Coming up
Module 5 - Theor. Eval. - Microsoft Access 2010	Coming up
Module 6 - Theor. Eval. - Microsoft Access 2010	Coming up

### Training for Upgrade 2007-2010

Module 1 - Theor. Eval. - Upgrade 2007-2010	FR	15 min	4 \$/2 €	6 \$/3 €	8 \$/6 €
Module 2 - Theor. Eval. - Upgrade 2007-2010	FR	15 min	4 \$/2 €	6 \$/3 €	8 \$/6 €

# MICROSOFT

## MS OFFICE 2007

CATEGORY/SUBCATEGORY	LANGUAGES					DURATION			PRICE		
	Fr.	Eng.	Spa.	Eng./Fr.	Eng./Dutch	3 months	6 months	12 months	3 months	6 months	12 months

### Training for Microsoft Access 2007

Module 1 - Theor. Eval. - Microsoft Access 2007	FR	15 min	4 \$/2 €	6 \$/3 €	8 \$/6 €
Module 2 - Theor. Eval. - Microsoft Access 2007	FR	15 min	4 \$/2 €	6 \$/3 €	8 \$/6 €
Module 3 - Theor. Eval. - Microsoft Access 2007	FR	15 min	4 \$/2 €	6 \$/3 €	8 \$/6 €
Module 4 - Theor. Eval. - Microsoft Access 2007	FR	15 min	4 \$/2 €	6 \$/3 €	8 \$/6 €
Module 5 - Theor. Eval. - Microsoft Access 2007	FR	15 min	4 \$/2 €	6 \$/3 €	8 \$/6 €
Module 6 - Theor. Eval. - Microsoft Access 2007	FR	15 min	4 \$/2 €	6 \$/3 €	8 \$/6 €

### Training for Microsoft Excel 2007

Module 1 - Theor. Eval. - Microsoft Excel 2007	FR	15 min	4 \$/2 €	6 \$/3 €	8 \$/6 €
Module 2 - Theor. Eval. - Microsoft Excel 2007	FR	15 min	4 \$/2 €	6 \$/3 €	8 \$/6 €
Module 3 - Theor. Eval. - Microsoft Excel 2007	FR	15 min	4 \$/2 €	6 \$/3 €	8 \$/6 €
Module 4 - Theor. Eval. - Microsoft Excel 2007	FR	15 min	4 \$/2 €	6 \$/3 €	8 \$/6 €
Module 5 - Theor. Eval. - Microsoft Excel 2007	FR	15 min	4 \$/2 €	6 \$/3 €	8 \$/6 €
Module 6 - Theor. Eval. - Microsoft Excel 2007	FR	15 min	4 \$/2 €	6 \$/3 €	8 \$/6 €

### Training for Microsoft Outlook 2007

Module 1 - Theor. Eval. - Microsoft Outlook 2007	FR	15 min	4 \$/2 €	6 \$/3 €	8 \$/6 €
Module 2 - Theor. Eval. - Microsoft Outlook 2007	FR	15 min	4 \$/2 €	6 \$/3 €	8 \$/6 €
Module 3 - Theor. Eval. - Microsoft Outlook 2007	FR	15 min	4 \$/2 €	6 \$/3 €	8 \$/6 €
Module 4 - Theor. Eval. - Microsoft Outlook 2007	FR	15 min	4 \$/2 €	6 \$/3 €	8 \$/6 €
Module 5 - Theor. Eval. - Microsoft Outlook 2007	FR	15 min	4 \$/2 €	6 \$/3 €	8 \$/6 €
Module 6 - Theor. Eval. - Microsoft Outlook 2007	FR	15 min	4 \$/2 €	6 \$/3 €	8 \$/6 €

### Training for Microsoft PowerPoint 2007

Module 1 - Theor. Eval. - Microsoft PowerPoint 2007	FR	15 min	4 \$/2 €	6 \$/3 €	8 \$/6 €
Module 2 - Theor. Eval. - Microsoft PowerPoint 2007	FR	15 min	4 \$/2 €	6 \$/3 €	8 \$/6 €
Module 3 - Theor. Eval. - Microsoft PowerPoint 2007	FR	15 min	4 \$/2 €	6 \$/3 €	8 \$/6 €
Module 4 - Theor. Eval. - Microsoft PowerPoint 2007	FR	15 min	4 \$/2 €	6 \$/3 €	8 \$/6 €
Module 5 - Theor. Eval. - Microsoft PowerPoint 2007	FR	15 min	4 \$/2 €	6 \$/3 €	8 \$/6 €
Module 6 - Theor. Eval. - Microsoft PowerPoint 2007	FR	15 min	4 \$/2 €	6 \$/3 €	8 \$/6 €

### Training for Microsoft Word 2007

Module 1 - Theor. Eval. - Microsoft Word 2007	FR	15 min	4 \$/2 €	6 \$/3 €	8 \$/6 €
Module 2 - Theor. Eval. - Microsoft Word 2007	FR	15 min	4 \$/2 €	6 \$/3 €	8 \$/6 €
Module 3 - Theor. Eval. - Microsoft Word 2007	FR	15 min	4 \$/2 €	6 \$/3 €	8 \$/6 €
Module 4 - Theor. Eval. - Microsoft Word 2007	FR	15 min	4 \$/2 €	6 \$/3 €	8 \$/6 €
Module 5 - Theor. Eval. - Microsoft Word 2007	FR	15 min	4 \$/2 €	6 \$/3 €	8 \$/6 €
Module 6 - Theor. Eval. - Microsoft Word 2007	FR	15 min	4 \$/2 €	6 \$/3 €	8 \$/6 €

CATEGORY/SUBCATEGORY	LANGUAGES					DURATION	PRICE		
	Fr.	Eng.	Spa.	Eng./Fr.	Eng./Dutch		3 months	6 months	12 months
<b>Training for Microsoft Access 2003</b>									
Module 1 - Theor. Eval. - Microsoft Access 2003	FR					15 min	4 \$/2 €	6 \$/3 €	8 \$/6 €
Module 2 - Theor. Eval. - Microsoft Access 2003	FR					15 min	4 \$/2 €	6 \$/3 €	8 \$/6 €
Module 3 - Theor. Eval. - Microsoft Access 2003	FR					15 min	4 \$/2 €	6 \$/3 €	8 \$/6 €
Module 4 - Theor. Eval. - Microsoft Access 2003	FR					15 min	4 \$/2 €	6 \$/3 €	8 \$/6 €
Module 5 - Theor. Eval. - Microsoft Access 2003	FR					15 min	4 \$/2 €	6 \$/3 €	8 \$/6 €
Module 6 - Theor. Eval. - Microsoft Access 2003	FR					15 min	4 \$/2 €	6 \$/3 €	8 \$/6 €
<b>Training for Microsoft Excel 2003</b>									
Module 1 - Theor. Eval. - Microsoft Excel 2003	FR					15 min	4 \$/2 €	6 \$/3 €	8 \$/6 €
Module 2 - Theor. Eval. - Microsoft Excel 2003	FR					15 min	4 \$/2 €	6 \$/3 €	8 \$/6 €
Module 3 - Theor. Eval. - Microsoft Excel 2003	FR					15 min	4 \$/2 €	6 \$/3 €	8 \$/6 €
Module 4 - Theor. Eval. - Microsoft Excel 2003	FR					15 min	4 \$/2 €	6 \$/3 €	8 \$/6 €
Module 5 - Theor. Eval. - Microsoft Excel 2003	FR					15 min	4 \$/2 €	6 \$/3 €	8 \$/6 €
Module 6 - Theor. Eval. - Microsoft Excel 2003	FR					15 min	4 \$/2 €	6 \$/3 €	8 \$/6 €
<b>Training for Microsoft Excel 2003</b>									
Module 1 - Theor. Eval. - Microsoft Excel 2003				!	!	15 min	4 \$/2 €	6 \$/3 €	8 \$/6 €
Module 2 - Theor. Eval. - Microsoft Excel 2003				!	!	15 min	4 \$/2 €	6 \$/3 €	8 \$/6 €
Module 3 - Theor. Eval. - Microsoft Excel 2003				!	!	15 min	4 \$/2 €	6 \$/3 €	8 \$/6 €
Module 3+ - Theor. Eval. - Microsoft Excel 2003				!	!	15 min	4 \$/2 €	6 \$/3 €	8 \$/6 €
<b>Training for Microsoft Outlook 2003</b>									
Module 1 - Theor. Eval. - Microsoft Outlook 2003	FR					15 min	4 \$/2 €	6 \$/3 €	8 \$/6 €
Module 2 - Theor. Eval. - Microsoft Outlook 2003	FR					15 min	4 \$/2 €	6 \$/3 €	8 \$/6 €
Module 3 - Theor. Eval. - Microsoft Outlook 2003	FR					15 min	4 \$/2 €	6 \$/3 €	8 \$/6 €
Module 4 - Theor. Eval. - Microsoft Outlook 2003	FR					15 min	4 \$/2 €	6 \$/3 €	8 \$/6 €
Module 5 - Theor. Eval. - Microsoft Outlook 2003	FR					15 min	4 \$/2 €	6 \$/3 €	8 \$/6 €
Module 6 - Theor. Eval. - Microsoft Outlook 2003	FR					15 min	4 \$/2 €	6 \$/3 €	8 \$/6 €
<b>Training for Microsoft Outlook 2003</b>									
Module 1 - Theor. Eval. - Microsoft Outlook 2003				!	!	15 min	4 \$/2 €	6 \$/3 €	8 \$/6 €
Module 2 - Theor. Eval. - Microsoft Outlook 2003				!	!	15 min	4 \$/2 €	6 \$/3 €	8 \$/6 €
Module 3 - Theor. Eval. - Microsoft Outlook 2003				!	!	15 min	4 \$/2 €	6 \$/3 €	8 \$/6 €
Module 3+ - Theor. Eval. - Microsoft Outlook 2003				!	!	15 min	4 \$/2 €	6 \$/3 €	8 \$/6 €
<b>Training for Microsoft PowerPoint 2003</b>									
Module 1 - Theor. Eval. - Microsoft PowerPoint 2003	FR					15 min	4 \$/2 €	6 \$/3 €	8 \$/6 €
Module 2 - Theor. Eval. - Microsoft PowerPoint 2003	FR					15 min	4 \$/2 €	6 \$/3 €	8 \$/6 €
Module 3 - Theor. Eval. - Microsoft PowerPoint 2003	FR					15 min	4 \$/2 €	6 \$/3 €	8 \$/6 €
Module 4 - Theor. Eval. - Microsoft PowerPoint 2003	FR					15 min	4 \$/2 €	6 \$/3 €	8 \$/6 €
Module 5 - Theor. Eval. - Microsoft PowerPoint 2003	FR					15 min	4 \$/2 €	6 \$/3 €	8 \$/6 €
Module 6 - Theor. Eval. - Microsoft PowerPoint 2003	FR					15 min	4 \$/2 €	6 \$/3 €	8 \$/6 €
<b>Training for Microsoft PowerPoint 2003</b>									
Module 1 - Theor. Eval. - Microsoft PowerPoint 2003				!	!	15 min	4 \$/2 €	6 \$/3 €	8 \$/6 €
Module 2 - Theor. Eval. - Microsoft PowerPoint 2003				!	!	15 min	4 \$/2 €	6 \$/3 €	8 \$/6 €
Module 3 - Theor. Eval. - Microsoft PowerPoint 2003				!	!	15 min	4 \$/2 €	6 \$/3 €	8 \$/6 €
Module 3+ - Theor. Eval. - Microsoft PowerPoint 2003				!	!	15 min	4 \$/2 €	6 \$/3 €	8 \$/6 €
<b>Training for Microsoft Word 2003</b>									
Module 1 - Theor. Eval. - Microsoft Word 2003	FR					15 min	4 \$/2 €	6 \$/3 €	8 \$/6 €
Module 2 - Theor. Eval. - Microsoft Word 2003	FR					15 min	4 \$/2 €	6 \$/3 €	8 \$/6 €
Module 3 - Theor. Eval. - Microsoft Word 2003	FR					15 min	4 \$/2 €	6 \$/3 €	8 \$/6 €
Module 4 - Theor. Eval. - Microsoft Word 2003	FR					15 min	4 \$/2 €	6 \$/3 €	8 \$/6 €
Module 5 - Theor. Eval. - Microsoft Word 2003	FR					15 min	4 \$/2 €	6 \$/3 €	8 \$/6 €
Module 6 - Theor. Eval. - Microsoft Word 2003	FR					15 min	4 \$/2 €	6 \$/3 €	8 \$/6 €
<b>Training for Microsoft Word 2003</b>									
Module 1 - Theor. Eval. - Microsoft Word 2003				!	!	15 min	4 \$/2 €	6 \$/3 €	8 \$/6 €
Module 2 - Theor. Eval. - Microsoft Word 2003				!	!	15 min	4 \$/2 €	6 \$/3 €	8 \$/6 €
Module 3 - Theor. Eval. - Microsoft Word 2003				!	!	15 min	4 \$/2 €	6 \$/3 €	8 \$/6 €
Module 3+ - Theor. Eval. - Microsoft Word 2003				!	!	15 min	4 \$/2 €	6 \$/3 €	8 \$/6 €

CATEGORY/SUBCATEGORY	LANGUAGES					DURATION	PRICE		
	Fr.	Eng.	Spa.	Eng./Fr.	Eng./Dutch		3 months	6 months	12 months
<b>Training for Microsoft Access 2002</b>									
Module 1 - Theor. Eval. - Microsoft Access 2002	FR					15 min	4 \$/2 €	6 \$/3 €	8 \$/6 €
Module 2 - Theor. Eval. - Microsoft Access 2002	FR					15 min	4 \$/2 €	6 \$/3 €	8 \$/6 €
Module 3 - Theor. Eval. - Microsoft Access 2002	FR					15 min	4 \$/2 €	6 \$/3 €	8 \$/6 €
Module 4 - Theor. Eval. - Microsoft Access 2002	FR					15 min	4 \$/2 €	6 \$/3 €	8 \$/6 €
Module 5 - Theor. Eval. - Microsoft Access 2002	FR					15 min	4 \$/2 €	6 \$/3 €	8 \$/6 €
Module 6 - Theor. Eval. - Microsoft Access 2002	FR					15 min	4 \$/2 €	6 \$/3 €	8 \$/6 €
<b>Training for Microsoft Excel 2002</b>									
Module 1 - Theor. Eval. - Microsoft Excel 2002	FR	Eng.				15 min	4 \$/2 €	6 \$/3 €	8 \$/6 €
Module 2 - Theor. Eval. - Microsoft Excel 2002	FR	Eng.				15 min	4 \$/2 €	6 \$/3 €	8 \$/6 €
Module 3 - Theor. Eval. - Microsoft Excel 2002	FR	Eng.				15 min	4 \$/2 €	6 \$/3 €	8 \$/6 €
Module 4 - Theor. Eval. - Microsoft Excel 2002	FR	Eng.				15 min	4 \$/2 €	6 \$/3 €	8 \$/6 €
Module 5 - Theor. Eval. - Microsoft Excel 2002	FR	Eng.				15 min	4 \$/2 €	6 \$/3 €	8 \$/6 €
Module 6 - Theor. Eval. - Microsoft Excel 2002	FR	Eng.				15 min	4 \$/2 €	6 \$/3 €	8 \$/6 €
<b>Training for Microsoft Excel 2002</b>									
Module 1 - Theor. Eval. - Microsoft Excel 2002				!	!	15 min	4 \$/2 €	6 \$/3 €	8 \$/6 €
Module 2 - Theor. Eval. - Microsoft Excel 2002				!	!	15 min	4 \$/2 €	6 \$/3 €	8 \$/6 €
Module 3 - Theor. Eval. - Microsoft Excel 2002				!	!	15 min	4 \$/2 €	6 \$/3 €	8 \$/6 €
Module 3+ - Theor. Eval. - Microsoft Excel 2002				!	!	15 min	4 \$/2 €	6 \$/3 €	8 \$/6 €
<b>Training for Microsoft Excel 2002</b>									
Microsoft Excel 2002 - Theor. Eval. - New Features	FR					15 min	4 \$/2 €	6 \$/3 €	8 \$/6 €
<b>Training for Microsoft Outlook 2002</b>									
Module 1 - Theor. Eval. - Microsoft Outlook 2002	FR					15 min	4 \$/2 €	6 \$/3 €	8 \$/6 €
Module 2 - Theor. Eval. - Microsoft Outlook 2002	FR					15 min	4 \$/2 €	6 \$/3 €	8 \$/6 €
Module 3 - Theor. Eval. - Microsoft Outlook 2002	FR					15 min	4 \$/2 €	6 \$/3 €	8 \$/6 €
Module 4 - Theor. Eval. - Microsoft Outlook 2002	FR					15 min	4 \$/2 €	6 \$/3 €	8 \$/6 €
Module 5 - Theor. Eval. - Microsoft Outlook 2002	FR					15 min	4 \$/2 €	6 \$/3 €	8 \$/6 €
Module 6 - Theor. Eval. - Microsoft Outlook 2002	FR					15 min	4 \$/2 €	6 \$/3 €	8 \$/6 €
<b>Training for Microsoft PowerPoint 2002</b>									
Module 1 - Theor. Eval. - Microsoft PowerPoint 2002	FR	Eng.				15 min	4 \$/2 €	6 \$/3 €	8 \$/6 €
Module 2 - Theor. Eval. - Microsoft PowerPoint 2002	FR	Eng.				15 min	4 \$/2 €	6 \$/3 €	8 \$/6 €
Module 3 - Theor. Eval. - Microsoft PowerPoint 2002	FR	Eng.				15 min	4 \$/2 €	6 \$/3 €	8 \$/6 €
Module 4 - Theor. Eval. - Microsoft PowerPoint 2002	FR	Eng.				15 min	4 \$/2 €	6 \$/3 €	8 \$/6 €
Module 5 - Theor. Eval. - Microsoft PowerPoint 2002	FR	Eng.				15 min	4 \$/2 €	6 \$/3 €	8 \$/6 €
Module 6 - Theor. Eval. - Microsoft PowerPoint 2002	FR	Eng.				15 min	4 \$/2 €	6 \$/3 €	8 \$/6 €
<b>Training for Microsoft PowerPoint 2002</b>									
Module 1 - Theor. Eval. - Microsoft PowerPoint 2002				!	!	15 min	4 \$/2 €	6 \$/3 €	8 \$/6 €
Module 2 - Theor. Eval. - Microsoft PowerPoint 2002				!	!	15 min	4 \$/2 €	6 \$/3 €	8 \$/6 €
Module 3 - Theor. Eval. - Microsoft PowerPoint 2002				!	!	15 min	4 \$/2 €	6 \$/3 €	8 \$/6 €
Module 3+ - Theor. Eval. - Microsoft PowerPoint 2002				!	!	15 min	4 \$/2 €	6 \$/3 €	8 \$/6 €
<b>Training for Microsoft Word 2002</b>									
Module 1 - Theor. Eval. - Microsoft Word 2002	FR	Eng.				15 min	4 \$/2 €	6 \$/3 €	8 \$/6 €
Module 2 - Theor. Eval. - Microsoft Word 2002	FR	Eng.				15 min	4 \$/2 €	6 \$/3 €	8 \$/6 €
Module 3 - Theor. Eval. - Microsoft Word 2002	FR	Eng.				15 min	4 \$/2 €	6 \$/3 €	8 \$/6 €
Module 4 - Theor. Eval. - Microsoft Word 2002	FR	Eng.				15 min	4 \$/2 €	6 \$/3 €	8 \$/6 €
Module 5 - Theor. Eval. - Microsoft Word 2002	FR	Eng.				15 min	4 \$/2 €	6 \$/3 €	8 \$/6 €
Module 6 - Theor. Eval. - Microsoft Word 2002	FR	Eng.				15 min	4 \$/2 €	6 \$/3 €	8 \$/6 €
<b>Training for Microsoft Word 2002</b>									
Module 1 - Theor. Eval. - Microsoft Word 2002				!	!	15 min	4 \$/2 €	6 \$/3 €	8 \$/6 €
Module 2 - Theor. Eval. - Microsoft Word 2002				!	!	15 min	4 \$/2 €	6 \$/3 €	8 \$/6 €
Module 3 - Theor. Eval. - Microsoft Word 2002				!	!	15 min	4 \$/2 €	6 \$/3 €	8 \$/6 €
Module 3+ - Theor. Eval. - Microsoft Word 2002				!	!	15 min	4 \$/2 €	6 \$/3 €	8 \$/6 €
<b>Training for Microsoft Word 2002</b>									
Microsoft Word 2002 - Theor. Eval. - New Features	FR					15 min	4 \$/2 €	6 \$/3 €	8 \$/6 €

## MICROSOFT

## MS OFFICE 2000

CATEGORY/SUBCATEGORY	LANGUAGES					DURATION	PRICE		
	Fr.	Eng.	Spa.	Eng./Fr.	Eng./Dutch		3 months	6 months	12 months
<b>Training for Microsoft Access 2000</b>									
Module 1 - Theor. Eval. - Microsoft Access 2000	FR	Eng.				15 min	4 \$/2 €	6 \$/3 €	8 \$/6 €
Module 2 - Theor. Eval. - Microsoft Access 2000	FR	Eng.				15 min	4 \$/2 €	6 \$/3 €	8 \$/6 €
Module 3 - Theor. Eval. - Microsoft Access 2000	FR	Eng.				15 min	4 \$/2 €	6 \$/3 €	8 \$/6 €
<b>Training for Microsoft Excel 2000</b>									
Module 1 - Theor. Eval. - Microsoft Excel 2000	FR	Eng.				15 min	4 \$/2 €	6 \$/3 €	8 \$/6 €
Module 2 - Theor. Eval. - Microsoft Excel 2000	FR	Eng.				15 min	4 \$/2 €	6 \$/3 €	8 \$/6 €
Module 3 - Theor. Eval. - Microsoft Excel 2000	FR	Eng.				15 min	4 \$/2 €	6 \$/3 €	8 \$/6 €
<b>Training for Microsoft Office 2000</b>									
Microsoft Office 2000 - Theor. Eval. - New Features	FR	Eng.				15 min	4 \$/2 €	6 \$/3 €	8 \$/6 €
<b>Training for Microsoft Outlook 2000</b>									
Module 1 - Theor. Eval. - Microsoft Outlook 2000	FR	Eng.				15 min	4 \$/2 €	6 \$/3 €	8 \$/6 €
Module 2 - Theor. Eval. - Microsoft Outlook 2000	FR	Eng.				15 min	4 \$/2 €	6 \$/3 €	8 \$/6 €
Module 3 - Theor. Eval. - Microsoft Outlook 2000	FR	Eng.				15 min	4 \$/2 €	6 \$/3 €	8 \$/6 €
<b>Training for Microsoft PowerPoint 2000</b>									
Module 1 - Theor. Eval. - Microsoft PowerPoint 2000	FR	Eng.				15 min	4 \$/2 €	6 \$/3 €	8 \$/6 €
Module 2 - Theor. Eval. - Microsoft PowerPoint 2000	FR	Eng.				15 min	4 \$/2 €	6 \$/3 €	8 \$/6 €
Module 3 - Theor. Eval. - Microsoft PowerPoint 2000	FR	Eng.				15 min	4 \$/2 €	6 \$/3 €	8 \$/6 €
<b>Training for Microsoft Word 2000</b>									
Module 1 - Theor. Eval. - Microsoft Word 2000	FR	Eng.				15 min	4 \$/2 €	6 \$/3 €	8 \$/6 €
Module 2 - Theor. Eval. - Microsoft Word 2000	FR	Eng.				15 min	4 \$/2 €	6 \$/3 €	8 \$/6 €
Module 3 - Theor. Eval. - Microsoft Word 2000	FR	Eng.				15 min	4 \$/2 €	6 \$/3 €	8 \$/6 €
Module 4 - Theor. Eval. - Microsoft Word 2000	FR	Eng.				15 min	4 \$/2 €	6 \$/3 €	8 \$/6 €

## MICROSOFT

## MS WINDOWS

CATEGORY/SUBCATEGORY	LANGUAGES					DURATION	PRICE		
	Fr.	Eng.	Spa.	Eng./Fr.	Eng./Dutch		3 months	6 months	12 months
<b>Training for Microsoft Windows 7</b>									
Module 1 - Theor. Eval. - Microsoft Windows 7									
Module 2 - Theor. Eval. - Microsoft Windows 7									
Module 3 - Theor. Eval. - Microsoft Windows 7									
<b>Training for Microsoft Windows Vista</b>									
Module 1 - Theor. Eval. - Microsoft Windows Vista	FR					15 min	4 \$/2 €	6 \$/3 €	8 \$/6 €
Module 2 - Theor. Eval. - Microsoft Windows Vista	FR					15 min	4 \$/2 €	6 \$/3 €	8 \$/6 €
Module 3 - Theor. Eval. - Microsoft Windows Vista	FR					15 min	4 \$/2 €	6 \$/3 €	8 \$/6 €
<b>Training for Microsoft Windows XP</b>									
Module 1 - Theor. Eval. - Microsoft Windows XP	FR					15 min	4 \$/2 €	6 \$/3 €	8 \$/6 €
Module 2 - Theor. Eval. - Microsoft Windows XP	FR					15 min	4 \$/2 €	6 \$/3 €	8 \$/6 €
Module 3 - Theor. Eval. - Microsoft Windows XP	FR					15 min	4 \$/2 €	6 \$/3 €	8 \$/6 €
<b>Training for Microsoft Windows 2000</b>									
Module 1 - Theor. Eval. - Microsoft Windows 2000	FR	Eng.				15 min	4 \$/2 €	6 \$/3 €	8 \$/6 €
Module 2 - Theor. Eval. - Microsoft Windows 2000	FR	Eng.				15 min	4 \$/2 €	6 \$/3 €	8 \$/6 €
Module 3 - Theor. Eval. - Microsoft Windows 2000	FR	Eng.				15 min	4 \$/2 €	6 \$/3 €	8 \$/6 €
<b>Training for Microsoft Windows 98</b>									
Module 1 - Theor. Eval. - Microsoft Windows 98	FR	Eng.				15 min	4 \$/2 €	6 \$/3 €	8 \$/6 €
Module 2 - Theor. Eval. - Microsoft Windows 98	FR	Eng.				15 min	4 \$/2 €	6 \$/3 €	8 \$/6 €
Module 3 - Theor. Eval. - Microsoft Windows 98	FR	Eng.				15 min	4 \$/2 €	6 \$/3 €	8 \$/6 €
Module 4 - Theor. Eval. - Microsoft Windows 98	FR	Eng.				15 min	4 \$/2 €	6 \$/3 €	8 \$/6 €

# MICROSOFT

## MS INTERNET EXPLORER

CATEGORY/SUBCATEGORY	LANGUAGES					DURATION	PRICE		
	Fr.	Eng.	Spa.	Eng./Fr.	Eng./Dutch		3 months	6 months	12 months

### Training for Microsoft Internet Explorer 5

Module 1 - Theor. Eval. - Microsoft Internet Explorer 5	FR	Eng.				15 min	4 \$/2 €	6 \$/3 €	8 \$/6 €
Module 2 - Theor. Eval. - Microsoft Internet Explorer 5	FR	Eng.				15 min	4 \$/2 €	6 \$/3 €	8 \$/6 €
Module 3 - Theor. Eval. - Microsoft Internet Explorer 5	FR	Eng.				15 min	4 \$/2 €	6 \$/3 €	8 \$/6 €

# OPENOFFICE.ORG

## OPENOFFICE.ORG VERSION 2.0

CATEGORY/SUBCATEGORY	LANGUAGES					DURATION	PRICE		
	Fr.	Eng.	Spa.	Eng./Fr.	Eng./Dutch		3 months	6 months	12 months

### Training for OpenOffice.org Calc 2.0

Module 1 - Theor. Eval. - OpenOffice.org Calc 2.0	FR					15 min	4 \$/2 €	6 \$/3 €	8 \$/6 €
Module 2 - Theor. Eval. - OpenOffice.org Calc 2.0	FR					15 min	4 \$/2 €	6 \$/3 €	8 \$/6 €
Module 3 - Theor. Eval. - OpenOffice.org Calc 2.0	FR					15 min	4 \$/2 €	6 \$/3 €	8 \$/6 €

### Training for OpenOffice.org Impress 2.0

Module 1 - Theor. Eval. - OpenOffice.org Impress 2.0	FR					15 min	4 \$/2 €	6 \$/3 €	8 \$/6 €
Module 2 - Theor. Eval. - OpenOffice.org Impress 2.0	FR					15 min	4 \$/2 €	6 \$/3 €	8 \$/6 €
Module 3 - Theor. Eval. - OpenOffice.org Impress 2.0	FR					15 min	4 \$/2 €	6 \$/3 €	8 \$/6 €

### Training for OpenOffice.org Writer 2.0

Module 1 - Theor. Eval. - OpenOffice.org Writer 2.0	FR					15 min	4 \$/2 €	6 \$/3 €	8 \$/6 €
Module 2 - Theor. Eval. - OpenOffice.org Writer 2.0	FR					15 min	4 \$/2 €	6 \$/3 €	8 \$/6 €
Module 3 - Theor. Eval. - OpenOffice.org Writer 2.0	FR					15 min	4 \$/2 €	6 \$/3 €	8 \$/6 €

# LOTUS

## LOTUS NOTES

CATEGORY/SUBCATEGORY	LANGUAGES					DURATION	PRICE		
	Fr.	Eng.	Spa.	Eng./Fr.	Eng./Dutch		3 months	6 months	12 months

### Training for Lotus Notes 8.5

Module 1 - Theor. Eval. - Lotus Notes 8.5	FR					15 min	4 \$/2 €	6 \$/3 €	8 \$/6 €
Module 2 - Theor. Eval. - Lotus Notes 8.5	FR					15 min	4 \$/2 €	6 \$/3 €	8 \$/6 €
Module 3 - Theor. Eval. - Lotus Notes 8.5	FR					15 min	4 \$/2 €	6 \$/3 €	8 \$/6 €

### Training for Lotus Notes 7

Module 1 - Theor. Eval. - Lotus Notes 7	FR	Eng.				15 min	4 \$/2 €	6 \$/3 €	8 \$/6 €
Module 2 - Theor. Eval. - Lotus Notes 7	FR	Eng.				15 min	4 \$/2 €	6 \$/3 €	8 \$/6 €
Module 3 - Theor. Eval. - Lotus Notes 7	FR	Eng.				15 min	4 \$/2 €	6 \$/3 €	8 \$/6 €

### Training for Lotus Notes 6

Module 1 - Theor. Eval. - Lotus Notes 6	FR					15 min	4 \$/2 €	6 \$/3 €	8 \$/6 €
Module 2 - Theor. Eval. - Lotus Notes 6	FR					15 min	4 \$/2 €	6 \$/3 €	8 \$/6 €
Module 3 - Theor. Eval. - Lotus Notes 6	FR					15 min	4 \$/2 €	6 \$/3 €	8 \$/6 €

### Training for Lotus Notes Client R5 Courier

Module 1 - Theor. Eval. - Lotus Notes Client R5 Courier	FR	Eng.				15 min	4 \$/2 €	6 \$/3 €	8 \$/6 €
Module 2 - Theor. Eval. - Lotus Notes Client R5 Courier	FR	Eng.				15 min	4 \$/2 €	6 \$/3 €	8 \$/6 €
Module 3 - Theor. Eval. - Lotus Notes Client R5 Courier	FR	Eng.				15 min	4 \$/2 €	6 \$/3 €	8 \$/6 €

# Sustainable Development

Collection:

90 min. pour comprendre



## 90 MINUTES POUR COMPRENDRE

METHODE E.O.L.E (EVALUER - ORGANISER - LANCER - ECOUTER)

CATEGORY/SUBCATEGORY	LANGUAGES					DURATION			PRICE		
	Fr.	Eng.	Spa.	Eng./Fr.	Eng./Dutch	3 months	6 months	12 months			

4.1

### Collection "90 Minutes Pour Comprendre"

Mod. 1 - Qu'est-ce que le développement durable ?	Coming up
Mod. 2 - Implanter avec succès une démarche de développement durable	Coming up
Mod. 3 - Compréhension des enjeux	Coming up
Mod. 4 - Diagnostic	Coming up
Mod. 5 - Vision et objectif	Coming up
Mod. 6 - Orientations prioritaires	Coming up
Mod. 7 - Identification des normes	Coming up
Mod. 8 - Plan d'action	Coming up
Mod. 9 - Ecoefficacité	Coming up
Mod. 10 - Suivi des indicateurs	Coming up
Mod. 11 - Communication des résultats	Coming up
Mod. 12 - Marketing Durable	Coming up
Mod. 13 - Approvisionnement responsable	Coming up
Mod. 14 - Ecodesign	Coming up
Mod. 15 - La gestion du cycle de vie	Coming up



## Other

Accounting  
Learning software  
Management software



## ACCOUNTING

## SIMPLY ACCOUNTING

5.1

CATEGORY/SUBCATEGORY	LANGUAGES					DURATION	PRICE		
	Fr.	Eng.	Spa.	Eng./Fr.	Eng./Dutch		3 months	6 months	12 months

## Training for Simply Accounting Version 2005 Pro

Module 1 - Introduction	FR	Eng.				180 min	<b>20 \$/16 €</b>	<b>30 \$/24 €</b>	<b>40 \$/32 €</b>
Module 2 - Level 1 : General Journal	FR	Eng.				180 min	<b>20 \$/16 €</b>	<b>30 \$/24 €</b>	<b>40 \$/32 €</b>

## LEARNING SOFTWARE

CATEGORY/SUBCATEGORY	LANGUAGES					DURATION	PRICE		
	Fr.	Eng.	Spa.	Eng./Fr.	Eng./Dutch		3 months	6 months	12 months

 **Métafo version 2**

Métafo version 2	FR						<b>28 \$/19 €</b>	<b>42 \$/28.50 €</b>	<b>56 \$/38 €</b>
------------------	----	--	--	--	--	--	-------------------	----------------------	-------------------

 **Olphy**

Module 1 : Optique géométrique	FR					158 min	<b>98 \$/78 €</b>	<b>148 \$/118 €</b>	<b>198 \$/158 €</b>
Module 2 : Nature de la lumière	FR					104 min	<b>98 \$/78 €</b>	<b>148 \$/118 €</b>	<b>198 \$/158 €</b>
Module 3 : Instruments d'optique et de l'œil	FR					92 min	<b>98 \$/78 €</b>	<b>148 \$/118 €</b>	<b>198 \$/158 €</b>
Module 4 : Optique ondulatoire	FR					132 min	<b>98 \$/78 €</b>	<b>148 \$/118 €</b>	<b>198 \$/158 €</b>
Module 5 : Optique guidée	FR					92 min	<b>98 \$/78 €</b>	<b>148 \$/118 €</b>	<b>198 \$/158 €</b>
Module 6 : Sources et détecteurs I	FR					133 min	<b>98 \$/78 €</b>	<b>148 \$/118 €</b>	<b>198 \$/158 €</b>
Module 7 : Sources et détecteurs II	FR					126 min	<b>98 \$/78 €</b>	<b>148 \$/118 €</b>	<b>198 \$/158 €</b>

## MANAGEMENT SOFTWARE

CATEGORY/SUBCATEGORY	LANGUAGES					DURATION	PRICE		
	Fr.	Eng.	Spa.	Eng./Fr.	Eng./Dutch		3 months	6 months	12 months

## Management software

Introduction to SAP	FR	Eng.				130 min	<b>100 \$/80 €</b>	<b>150 \$/120 €</b>	<b>200 \$/160 €</b>
SAP R/3 Release 4.6 Series		Eng.				1200 min	<b>34 \$/26 €</b>	<b>52 \$/39 €</b>	<b>68 \$/52 €</b>



# Data Processing

Certification

Programming Languages



## CERTIFICATION

### MS WINDOWS SERVER

6.1

CATEGORY/SUBCATEGORY	LANGUAGES					DURATION	PRICE		
	Fr.	Eng.	Spa.	Eng./Fr.	Eng./Dutch		3 months	6 months	12 months
<b>Microsoft Windows Server 2003</b> MS Windows Server 2003 Series		Eng.				1080 min	<b>58 \$/46 €</b>	<b>87 \$/69 €</b>	<b>116 \$/92 €</b>
<b>MCSE Examen 70-290</b> MS Windows Server 2003 Administration		Eng.				3240 min	<b>58 \$/46 €</b>	<b>87 \$/69 €</b>	<b>116 \$/92 €</b>
<b>MCSE Examen 70-291</b> MS Windows Server 2003 Network Management		Eng.				3240 min	<b>58 \$/46 €</b>	<b>87 \$/69 €</b>	<b>116 \$/92 €</b>
<b>MCSE Examen 70-293</b> MS Windows Server 2003 Network Planning		Eng.				3060 min	<b>58 \$/46 €</b>	<b>87 \$/69 €</b>	<b>116 \$/92 €</b>
<b>MCSE Examen 70-294</b> MS Windows Server 2003 Active Directory		Eng.				2340 min	<b>58 \$/46 €</b>	<b>87 \$/69 €</b>	<b>116 \$/92 €</b>
<b>MCSE Examen 70-297</b> MS Windows Server 2003 Infrastructure		Eng.				1320 min	<b>58 \$/46 €</b>	<b>87 \$/69 €</b>	<b>116 \$/92 €</b>
<b>MCSE Examen 70-298</b> MS Windows Server 2003 Security		Eng.				2040 min	<b>58 \$/46 €</b>	<b>87 \$/69 €</b>	<b>116 \$/92 €</b>

## PROGRAMMING LANGUAGES

CATEGORY/SUBCATEGORY	LANGUAGES					DURATION	PRICE		
	Fr.	Eng.	Spa.	Eng./Fr.	Eng./Dutch		3 months	6 months	12 months
<b>Java</b> Java 1.2 Series		Ang.				1200 min	<b>44 \$/34 €</b>	<b>66 \$/51 €</b>	<b>88 \$/68 €</b>
Java 2 5.0 Programming Series		Ang.				1860 min	<b>44 \$/34 €</b>	<b>66 \$/51 €</b>	<b>88 \$/68 €</b>
JavaScript Series		Ang.				840 min	<b>44 \$/34 €</b>	<b>66 \$/51 €</b>	<b>88 \$/68 €</b>



# Languages

Assimil

Capturator

Commet Multimedia



## CAPTURATOR

7.1

CATEGORY/SUBCATEGORY	LANGUAGES				DURATION	PRICE		
	Fr.	Eng.	It.	Spa.		3 months	6 months	12 months
<b>Collection "Allegrementi"</b>								
Italian Course: Beginner Level	FR	Eng.		Spa.	50 h.	50 \$/40 €	75 \$/60 €	100 \$/80 €
Italian Course: Elementary Level	FR	Eng.		Spa.	50 h.	50 \$/40 €	75 \$/60 €	100 \$/80 €
Italian Course: Lower Intermediate Level	FR	Eng.			50 h.	50 \$/40 €	75 \$/60 €	100 \$/80 €
<b>Collection "Et Voilà !"</b>								
French Course: Beginner Level		Eng.	It.	Spa.	50 h.	50 \$/40 €	75 \$/60 €	100 \$/80 €
French Course: Elementary Level		Eng.	It.	Spa.	50 h.	50 \$/40 €	75 \$/60 €	100 \$/80 €
French Course: Lower Intermediate Level		Eng.	It.	Spa.	50 h.	50 \$/40 €	75 \$/60 €	100 \$/80 €
French Course: Upper Intermediate Level		Eng.	It.	Spa.	50 h.	50 \$/40 €	75 \$/60 €	100 \$/80 €
<b>Collection "It's Up to me"</b>								
English Course: Beginner Level	FR		It.	Spa.	50 h.	50 \$/40 €	75 \$/60 €	100 \$/80 €
English Course: Elementary Level	FR		It.	Spa.	50 h.	50 \$/40 €	75 \$/60 €	100 \$/80 €
English Course: Lower Intermediate Level	FR		It.	Spa.	50 h.	50 \$/40 €	75 \$/60 €	100 \$/80 €
English Course: Upper Intermediate Level	FR		It.	Spa.	50 h.	50 \$/40 €	75 \$/60 €	100 \$/80 €
<b>Collection "¡Ojalá!"</b>								
Spanish Course: Beginner Level	FR	Eng.	It.		50 h.	50 \$/40 €	75 \$/60 €	100 \$/80 €
Spanish Course: Elementary Level	FR	Eng.	It.		50 h.	50 \$/40 €	75 \$/60 €	100 \$/80 €
Spanish Course: Lower Intermediate Level	FR	Eng.	It.		50 h.	50 \$/40 €	75 \$/60 €	100 \$/80 €
Spanish Course: Upper Intermediate Level	FR	Eng.	It.		50 h.	50 \$/40 €	75 \$/60 €	100 \$/80 €

## COMMET MULTIMEDIA

CATEGORY/SUBCATEGORY	LANGUAGES				DURATION	PRICE		
	Fr.	Eng.	It.	Spa.		3 months	6 months	12 months
<b>Collection "Reflex'English"</b>								
Reflex'English Business	FR				200 h.	100 \$/60 €	150 \$/100 €	200 \$/160 €
Reflex'English Cambridge - Level 1	FR				150 h.	100 \$/60 €	150 \$/100 €	200 \$/160 €
Reflex'English Cambridge - Level 2	FR				150 h.	100 \$/60 €	150 \$/100 €	200 \$/160 €
Reflex'English Cambridge - Level 3	FR				150 h.	100 \$/60 €	150 \$/100 €	200 \$/160 €



# Office Automation

## General training

Microsoft

OpenOffice.org version 2.0

Lotus

Corel

Netscape

Novell



## GENERAL TRAINING

### CATEGORY/SUBCATEGORY

### LANGUAGES

### PRICE

Fr. Eng. Spa. Eng./Fr. Eng./Dutch

CATEGORY/SUBCATEGORY	Fr.	Eng.	Spa.	Eng./Fr.	Eng./Dutch	PRICE
<b>Training for Informatique Pratique</b> Informatique Pratique						99 \$/59 €
<b>Training for Internet Pratique</b> Internet Pratique						99 \$/59 €

## MICROSOFT

MS OFFICE 2007

### CATEGORY/SUBCATEGORY

### LANGUAGES

### PRICE

Fr. Eng. Spa. Eng./Fr. Eng./Dutch

CATEGORY/SUBCATEGORY	Fr.	Eng.	Spa.	Eng./Fr.	Eng./Dutch	PRICE
<b>Training for Microsoft Access 2007</b> CD 1 - Microsoft Access 2007						99 \$/59 €
CD 2 - Microsoft Access 2007						99 \$/59 €
<b>Training for Microsoft Excel 2007</b> CD 1 - Microsoft Excel 2007						99 \$/59 €
CD 2 - Microsoft Excel 2007						99 \$/59 €
<b>Training for Microsoft Outlook 2007</b> CD 1 - Microsoft Outlook 2007						99 \$/59 €
CD 2 - Microsoft Outlook 2007						99 \$/59 €
<b>Training for Microsoft PowerPoint 2007</b> CD 1 - Microsoft PowerPoint 2007						99 \$/59 €
CD 2 - Microsoft PowerPoint 2007						99 \$/59 €
<b>Training for Microsoft Word 2007</b> CD 1 - Microsoft Word 2007						99 \$/59 €
CD 2 - Microsoft Word 2007						99 \$/59 €

## MICROSOFT

MS OFFICE 2003

### CATEGORY/SUBCATEGORY

### LANGUAGES

### PRICE

Fr. Eng. Spa. Eng./Fr. Eng./Dutch

CATEGORY/SUBCATEGORY	Fr.	Eng.	Spa.	Eng./Fr.	Eng./Dutch	PRICE
<b>Training for Microsoft Access 2003</b> CD 1 - Microsoft Access 2003						99 \$/59 €
CD 2 - Microsoft Access 2003						99 \$/59 €
<b>Training for Microsoft Excel 2003</b> CD 1 - Microsoft Excel 2003						99 \$/59 €
CD 2 - Microsoft Excel 2003						99 \$/59 €

# MICROSOFT

## MS OFFICE 2003

CATEGORY/SUBCATEGORY	LANGUAGES					PRICE
	Fr.	Eng.	Spa.	Eng./Fr.	Eng./Dutch	

### Training for Microsoft Outlook 2003

CD 1 - Microsoft Outlook 2003	FR					99 \$/59 €
CD 2 - Microsoft Outlook 2003	FR					99 \$/59 €

### Training for Microsoft PowerPoint 2003

CD 1 - Microsoft PowerPoint 2003	FR					99 \$/59 €
CD 2 - Microsoft PowerPoint 2003	FR					99 \$/59 €

### Training for Microsoft Word 2003

CD 1 - Microsoft Word 2003	FR					99 \$/59 €
CD 2 - Microsoft Word 2003	FR					99 \$/59 €

# MICROSOFT

## MS OFFICE 2002

CATEGORY/SUBCATEGORY	LANGUAGES					PRICE
	Fr.	Eng.	Spa.	Eng./Fr.	Eng./Dutch	

### Training for Microsoft Access 2002

CD 1 - Microsoft Access 2002	FR					99 \$/59 €
CD 2 - Microsoft Access 2002	FR					99 \$/59 €

### Training for Microsoft Excel 2002

CD 1 - Microsoft Excel 2002	FR					99 \$/59 €
CD 2 - Microsoft Excel 2002	FR					99 \$/59 €

### Training for Microsoft Outlook 2002

CD 1 - Microsoft Outlook 2002	FR					99 \$/59 €
CD 2 - Microsoft Outlook 2002	FR					99 \$/59 €

### Training for Microsoft PowerPoint 2002

CD 1 - Microsoft PowerPoint 2002	FR					99 \$/59 €
CD 2 - Microsoft PowerPoint 2002	FR					99 \$/59 €

### Training for Microsoft Word 2002

CD 1 - Microsoft Word 2002	FR	Eng.				99 \$/59 €
CD 2 - Microsoft Word 2002	FR					99 \$/59 €

# MICROSOFT

## MS OFFICE 2000

CATEGORY/SUBCATEGORY	LANGUAGES					PRICE
	Fr.	Eng.	Spa.	Eng./Fr.	Eng./Dutch	

### Training for Microsoft Access 2000

Microsoft Access 2000	FR	Eng.				99 \$/59 €
-----------------------	----	------	--	--	--	------------

### Training for Microsoft Excel 2000

Microsoft Excel 2000	FR	Eng.				99 \$/59 €
----------------------	----	------	--	--	--	------------

### Training for Microsoft Outlook 2000

Microsoft Outlook 2000	FR	Eng.				99 \$/59 €
------------------------	----	------	--	--	--	------------

### Training for Microsoft PowerPoint 2000

Microsoft PowerPoint 2000	FR	Eng.				99 \$/59 €
---------------------------	----	------	--	--	--	------------

### Training for Microsoft Word 2000

Microsoft Word 2000	FR	Eng.				99 \$/59 €
---------------------	----	------	--	--	--	------------

### Training for Microsoft Word 2000 Plus

Microsoft Word 2000 Plus	FR					99 \$/59 €
--------------------------	----	--	--	--	--	------------

## MICROSOFT

## MS OFFICE 97

CATEGORY/SUBCATEGORY	LANGUAGES					PRICE
	Fr.	Eng.	Spa.	Eng./Fr.	Eng./Dutch	
<b>Training for Optimisation de MS Office 07</b> Optimisation de MS Office 07	FR					99 \$/59 €
<b>Training for Microsoft Access 97</b> Microsoft Access 97	FR	Eng.				99 \$/59 €
<b>Training for Microsoft Access 97</b> Microsoft Access 97			Spa.	no sound		99 \$/59 €
<b>Training for Microsoft Excel 97</b> Microsoft Excel 97	FR	Eng.		no sound	no sound	99 \$/59 €
<b>Training for Microsoft Excel 97</b> Microsoft Excel 97			Spa.			99 \$/59 €
<b>Training for Microsoft Outlook 97</b> Microsoft Outlook 97	FR	Eng.		no sound		99 \$/59 €
<b>Training for Microsoft PowerPoint 97</b> Microsoft PowerPoint 97	FR	Eng.		no sound	no sound	99 \$/59 €
<b>Training for Microsoft PowerPoint 97</b> Microsoft PowerPoint 97				no sound		99 \$/59 €
<b>Training for Microsoft Word 97</b> Microsoft Word 97	FR	Eng.		no sound	no sound	99 \$/59 €
<b>Training for Microsoft Word 97</b> Microsoft Word 97			Spa.			99 \$/59 €

## MICROSOFT

## MS OFFICE 95

CATEGORY/SUBCATEGORY	LANGUAGES					PRICE
	Fr.	Eng.	Spa.	Eng./Fr.	Eng./Dutch	
<b>Training for Microsoft Access 7.0</b> Microsoft Access 7.0	FR					99 \$/59 €
<b>Training for Microsoft Excel 7.0</b> Microsoft Excel 7.0	FR					99 \$/59 €
<b>Training for Microsoft PowerPoint 7.0</b> Microsoft PowerPoint 7.0	FR					99 \$/59 €
<b>Training for Microsoft Word 7.0</b> Microsoft Word 7.0	FR					99 \$/59 €
<b>Training for Microsoft Word 7.0</b> Microsoft Word 7.0		Eng.		no sound		99 \$/59 €

## MICROSOFT

## MS WINDOWS

CATEGORY/SUBCATEGORY	LANGUAGES					PRICE
	Fr.	Eng.	Spa.	Eng./Fr.	Eng./Dutch	
<b>Training for Microsoft Windows Vista</b> Microsoft Windows Vista	FR					99 \$/59 €
<b>Training for Microsoft Windows XP</b> Microsoft Windows XP	FR					99 \$/59 €

# MICROSOFT

## MS WINDOWS

CATEGORY/SUBCATEGORY	LANGUAGES					PRICE
	Fr.	Eng.	Spa.	Eng./Fr.	Eng./Dutch	
<b>Training for Microsoft Windows 2000</b> Microsoft Windows 2000	FR	Eng.				99 \$/59 €
<b>Training for Microsoft Windows 98</b> Microsoft Windows 98	FR	Eng.				99 \$/59 €
<b>Training for Microsoft Windows 95</b> Microsoft Windows 95	FR					99 \$/59 €
<b>Training for Microsoft Windows 95</b> Microsoft Windows 95		Eng.		no sound	no sound	99 \$/59 €
<b>Training for Microsoft Windows NT 4.0</b> Microsoft Windows NT 4.0	FR					99 \$/59 €
<b>Training for Microsoft Windows NT 4.0</b> Microsoft Windows NT 4.0		Eng.				99 \$/59 €

# MICROSOFT

## MS INTERNET EXPLORER

CATEGORY/SUBCATEGORY	LANGUAGES					PRICE
	Fr.	Eng.	Spa.	Eng./Fr.	Eng./Dutch	
<b>Training for Microsoft Internet Explorer 5</b> Microsoft Internet Explorer 5	FR	Eng.				99 \$/59 €
<b>Training for Microsoft Internet Explorer 4</b> Microsoft Internet Explorer 4	FR	Eng.				99 \$/59 €

# OPENOFFICE.ORG

## OPENOFFICE.ORG VERSION 2.0

CATEGORY/SUBCATEGORY	LANGUAGES					PRICE
	Fr.	Eng.	Spa.	Eng./Fr.	Eng./Dutch	
<b>Training for OpenOffice.org Calc 2.0</b> Microsoft OpenOffice.org Calc 2.0	FR					99 \$/59 €
<b>Training for OpenOffice.org Impress 2.0</b> Microsoft OpenOffice.org Impress 2.0	FR					99 \$/59 €
<b>Training for OpenOffice.org Writer 2.0</b> Microsoft OpenOffice.org Writer 2.0	FR					99 \$/59 €

# LOTUS

## LOTUS NOTES

CATEGORY/SUBCATEGORY	LANGUAGES					PRICE
	Fr.	Eng.	Spa.	Eng./Fr.	Eng./Dutch	
<b>Training for Lotus Notes 6</b> Lotus Notes 6	FR					99 \$/59 €
<b>Training for Lotus Notes Client R5 Courier</b> Lotus Notes Client R5 Courier	FR	Eng.				99 \$/59 €
<b>Training for Lotus Notes 4.6 Courier</b> Lotus Notes 4.6 Courier	FR	Eng.				99 \$/59 €
<b>Training for Lotus Notes 4.5 Utilisateur</b> Lotus Notes 4.5 Utilisateur	FR					99 \$/59 €

# LOTUS

## LOTUS SMART SUITE MILLENIUM

CATEGORY/SUBCATEGORY	LANGUAGES					PRICE
	Fr.	Eng.	Spa.	Eng./Fr.	Eng./Dutch	
<b>Training for Lotus 1-2-3 Millenium</b> Lotus 1-2-3 Millenium	FR					<b>99 \$/59 €</b>
<b>Training for Lotus Approach Millenium</b> Lotus Approach Millenium	FR					<b>99 \$/59 €</b>
<b>Training for Lotus Freelance Graphics Millenium</b> Lotus Freelance Graphics Millenium	FR					<b>99 \$/59 €</b>
<b>Training for Lotus WordPro Millenium</b> Lotus WordPro Millenium	FR					<b>99 \$/59 €</b>

# LOTUS

## LOTUS SMART SUITE 97

CATEGORY/SUBCATEGORY	LANGUAGES					PRICE
	Fr.	Eng.	Spa.	Eng./Fr.	Eng./Dutch	
<b>Training for Lotus 1-2-3 97</b> Lotus 1-2-3 97	FR					<b>99 \$/59 €</b>
<b>Training for Lotus Approach 97</b> Lotus Approach 97	FR					<b>99 \$/59 €</b>
<b>Training for Lotus Freelance Graphics 97</b> Lotus Freelance Graphics 97	FR					<b>99 \$/59 €</b>
<b>Training for Lotus WordPro 97</b> Lotus WordPro 97	FR					<b>99 \$/59 €</b>

# LOTUS

## LOTUS SMART SUITE 96

CATEGORY/SUBCATEGORY	LANGUAGES					PRICE
	Fr.	Eng.	Spa.	Eng./Fr.	Eng./Dutch	
<b>Training for Lotus WordPro 96</b> Lotus WordPro 96	FR					<b>99 \$/59 €</b>

# COREL

CATEGORY/SUBCATEGORY	LANGUAGES					PRICE
	Fr.	Eng.	Spa.	Eng./Fr.	Eng./Dutch	
<b>Training for Corel WordPerfect 8.0</b> Corel WordPerfect 8.0		X Eng.				<b>99 \$/59 €</b>

# NETSCAPE

CATEGORY/SUBCATEGORY	LANGUAGES					PRICE
	Fr.	Eng.	Spa.	Eng./Fr.	Eng./Dutch	

## Training for internet Netscape Communicator 4.0

Internet Netscape Communicator 40

FR

99 \$/59 €

## Training for internet Netscape Navigator 3.0

Internet Netscape Navigator 3.0

FR

99 \$/59 €

# NOVELL

CATEGORY/SUBCATEGORY	LANGUAGES					PRICE
	Fr.	Eng.	Spa.	Eng./Fr.	Eng./Dutch	

## Training for Novell WordPerfect 6.1

Novell WordPerfect 6.1

FR

99 \$/59 €

## Training for Novell WordPerfect 6.0

Novell WordPerfect 6.0

FR

99 \$/59 €

## Training for Novell WordPerfect 5.2

Novell WordPerfect 5.2

FR

99 \$/59 €

## Training for Novell Group Wise 5.2

Novell Group Wise 5.2

x

99 \$/59 €

## Training for Novell Group Wise 5.2

Novell Group Wise 5.2

Eng.

99 \$/59 €



# Learning software

EduOrtho

Métafo

Olphy



## EDUORTHO (exclusively for sale in Canada)

2.1

CATEGORY/SUBCATEGORY	LANGUAGES					PRICE
	Fr.	Eng.	Spa.	Eng./Fr.	Eng./Dutch	
<b>CréaLangage Version 4</b> (Professional License or MPME License)						
The integral - Module 1, 2, 3 et 4	FR					<b>1 080 \$</b>
Module 1 (Première lecture)	FR					<b>300 \$</b>
Module 2 (Phonème)	FR					<b>300 \$</b>
Module 3 (Langage écrit)	FR					<b>300 \$</b>
Module 4 (Grammaire et verbes)	FR					<b>300 \$</b>
<b>CréaMaths</b> (Professional License or MPME License)						
The integral - Module 1, 2, 3, 4, 5 et 6	FR					<b>610 \$</b>
Module 1 (Langage et Maths)	FR					<b>120 \$</b>
Module 2 (Quantités et Dénombrements)	FR					<b>120 \$</b>
Module 3 (Suites, Séries, Séquences)	FR					<b>120 \$</b>
Module 4 (Calcul mental)	FR					<b>120 \$</b>
Module 5 (Structures et techniques mathématiques)	FR					<b>120 \$</b>
Module 6 (Problèmes)	FR					<b>120 \$</b>
<b>De Temps en Temps</b> (Professional License or MPME License)						
De Temps en Temps	FR					<b>249 \$</b>
<b>Lire Avec Furi - The integral</b> (CD 1, 2, 3 et 4)						
General Public License without impression	FR					<b>156 \$</b>
Professional License with impression	FR					<b>269 \$</b>
MPME License with impression	FR					<b>336 \$</b>
<b>Lire Avec Furi - CD 1</b>						
General Public License without impression	FR					<b>39 \$</b>
Prof. or MPME License with impression	FR					<b>99 \$</b>
<b>Lire Avec Furi - CD 2</b>						
General Public License without impression	FR					<b>39 \$</b>
Prof. or MPME License with impression	FR					<b>99 \$</b>
<b>Lire Avec Furi - CD 3</b>						
General Public License without impression	FR					<b>39 \$</b>
Prof. or MPME License with impression	FR					<b>99 \$</b>
<b>Lire Avec Furi - CD 4</b>						
General Public License without impression	FR					<b>39 \$</b>
Prof. or MPME License with impression	FR					<b>99 \$</b>
<b>PRESCO</b> (Professional License or MPME License)						
PRESCO Adultes	FR					<b>696 \$</b>
PRESCO Enfants	FR					<b>496 \$</b>
PRESCO Petits-Enfants	FR					<b>96 \$</b>

## MÉTAFO (exclusively for sale in Canada)

CATEGORY/SUBCATEGORY	LANGUAGES					PRICE
	Fr.	Eng.	Spa.	Eng./Fr.	Eng./Dutch	
<b>Métafo Version 2</b>						
General Public or Professional License	FR					<b>99 \$</b>
Institutional License	FR					<b>399 \$</b>

## OLPHY

CATEGORY/SUBCATEGORY	LANGUAGES					PRICE
	Fr.	Eng.	Spa.	Eng./Fr.	Eng./Dutch	
<b>Olphy</b>						
Purchase of one CD-ROM	FR					<b>999 \$/799 €</b>
Location for 1 year	FR					<b>699 \$/559 €</b>
Location for 2 years	FR					<b>1248 \$/998 €</b>

# Office Automation

General training

Microsoft

OpenOffice.org version 2



## GENERAL TRAINING

CATEGORY/SUBCATEGORY

LANGUAGES

PRICE

Fr. Eng. Spa. Eng./Fr. Eng./Dutch

### Manual training for Informatique Pratique

Module 1 - Informatique Pratique	FR	1.60 \$/1 €
Module 2 - Informatique Pratique	FR	1.60 \$/1 €
Module 3 - Informatique Pratique	FR	1.60 \$/1 €

### Manual training for Internet Pratique

Module 1 - Internet Pratique	FR	1.60 \$/1 €
Module 2 - Internet Pratique	FR	1.60 \$/1 €
Module 3 - Internet Pratique	FR	1.60 \$/1 €

## MICROSOFT

MS OFFICE 2010

CATEGORY/SUBCATEGORY

LANGUAGES

PRICE

Fr. Eng. Spa. Eng./Fr. Eng./Dutch

### Manual training for Microsoft Excel 2010

Module 1 - Microsoft Excel 2010	FR	1.60 \$/1 €
Module 2 - Microsoft Excel 2010	FR	1.60 \$/1 €
Module 3 - Microsoft Excel 2010	FR	1.60 \$/1 €
Module 4 - Microsoft Excel 2010	FR	1.60 \$/1 €
Module 5 - Microsoft Excel 2010	FR	1.60 \$/1 €
Module 6 - Microsoft Excel 2010	FR	1.60 \$/1 €

### Manual training for Microsoft Outlook 2010

Module 1 - Microsoft Outlook 2010	FR	1.60 \$/1 €
Module 2 - Microsoft Outlook 2010	FR	1.60 \$/1 €
Module 3 - Microsoft Outlook 2010	FR	1.60 \$/1 €
Module 4 - Microsoft Outlook 2010	FR	1.60 \$/1 €
Module 5 - Microsoft Outlook 2010	FR	1.60 \$/1 €
Module 6 - Microsoft Outlook 2010	FR	1.60 \$/1 €

### Manual training for Microsoft PowerPoint 2010

Module 1 - Microsoft PowerPoint 2010	FR	1.60 \$/1 €
Module 2 - Microsoft PowerPoint 2010	FR	1.60 \$/1 €
Module 3 - Microsoft PowerPoint 2010	FR	1.60 \$/1 €
Module 4 - Microsoft PowerPoint 2010	FR	1.60 \$/1 €
Module 5 - Microsoft PowerPoint 2010	FR	1.60 \$/1 €
Module 6 - Microsoft PowerPoint 2010	FR	1.60 \$/1 €

### Manual training for Microsoft Word 2010

Module 1 - Microsoft Word 2010	FR	1.60 \$/1 €
Module 2 - Microsoft Word 2010	FR	1.60 \$/1 €
Module 3 - Microsoft Word 2010	FR	1.60 \$/1 €
Module 4 - Microsoft Word 2010	FR	1.60 \$/1 €
Module 5 - Microsoft Word 2010	FR	1.60 \$/1 €
Module 6 - Microsoft Word 2010	FR	1.60 \$/1 €

Legend : These manuals are only available in electronic .pdf version.

# MICROSOFT

## MS OFFICE 2010

CATEGORY/SUBCATEGORY	LANGUAGES					PRICE
	Fr.	Eng.	Spa.	Eng./Fr.	Eng./Dutch	

### Manual training for Microsoft Access 2010

Module 1 - Microsoft Access 2010	FR					1.60 \$/1 €
Module 2 - Microsoft Access 2010	FR					1.60 \$/1 €
Module 3 - Microsoft Access 2010	FR					1.60 \$/1 €
Module 4 - Microsoft Access 2010	FR					1.60 \$/1 €
Module 5 - Microsoft Access 2010	FR					1.60 \$/1 €
Module 6 - Microsoft Access 2010	FR					1.60 \$/1 €

# MICROSOFT

## MS OFFICE 2007

CATEGORY/SUBCATEGORY	LANGUAGES					PRICE
	Fr.	Eng.	Spa.	Eng./Fr.	Eng./Dutch	

### Manual training for Microsoft Excel 2007

Module 1 - Microsoft Excel 2007	FR					1.60 \$/1 €
Module 2 - Microsoft Excel 2007	FR					1.60 \$/1 €
Module 3 - Microsoft Excel 2007	FR					1.60 \$/1 €
Module 4 - Microsoft Excel 2007	FR					1.60 \$/1 €
Module 5 - Microsoft Excel 2007	FR					1.60 \$/1 €
Module 6 - Microsoft Excel 2007	FR					1.60 \$/1 €

### Manual training for Microsoft Outlook 2007

Module 1 - Microsoft Outlook 2007	FR					1.60 \$/1 €
Module 2 - Microsoft Outlook 2007	FR					1.60 \$/1 €
Module 3 - Microsoft Outlook 2007	FR					1.60 \$/1 €
Module 4 - Microsoft Outlook 2007	FR					1.60 \$/1 €
Module 5 - Microsoft Outlook 2007	FR					1.60 \$/1 €
Module 6 - Microsoft Outlook 2007	FR					1.60 \$/1 €

### Manual training for Microsoft PowerPoint 2007

Module 1 - Microsoft PowerPoint 2007	FR					1.60 \$/1 €
Module 2 - Microsoft PowerPoint 2007	FR					1.60 \$/1 €
Module 3 - Microsoft PowerPoint 2007	FR					1.60 \$/1 €
Module 4 - Microsoft PowerPoint 2007	FR					1.60 \$/1 €
Module 5 - Microsoft PowerPoint 2007	FR					1.60 \$/1 €
Module 6 - Microsoft PowerPoint 2007	FR					1.60 \$/1 €

### Manual training for Microsoft Word 2007

Module 1 - Microsoft Word 2007	FR					1.60 \$/1 €
Module 2 - Microsoft Word 2007	FR					1.60 \$/1 €
Module 3 - Microsoft Word 2007	FR					1.60 \$/1 €
Module 4 - Microsoft Word 2007	FR					1.60 \$/1 €
Module 5 - Microsoft Word 2007	FR					1.60 \$/1 €
Module 6 - Microsoft Word 2007	FR					1.60 \$/1 €

### Manual training for Microsoft Access 2007

Module 1 - Microsoft Access 2007	FR					1.60 \$/1 €
Module 2 - Microsoft Access 2007	FR					1.60 \$/1 €
Module 3 - Microsoft Access 2007	FR					1.60 \$/1 €
Module 4 - Microsoft Access 2007	FR					1.60 \$/1 €
Module 5 - Microsoft Access 2007	FR					1.60 \$/1 €
Module 6 - Microsoft Access 2007	FR					1.60 \$/1 €

# MICROSOFT

## MS OFFICE 2003

CATEGORY/SUBCATEGORY	LANGUAGES					PRICE
	Fr.	Eng.	Spa.	Eng./Fr.	Eng./Dutch	

### Manual training for Microsoft Excel 2003

Module 1 - Microsoft Excel 2003	FR					1.60 \$/1 €
Module 2 - Microsoft Excel 2003	FR					1.60 \$/1 €
Module 3 - Microsoft Excel 2003	FR					1.60 \$/1 €
Module 4 - Microsoft Excel 2003	FR					1.60 \$/1 €
Module 5 - Microsoft Excel 2003	FR					1.60 \$/1 €
Module 6 - Microsoft Excel 2003	FR					1.60 \$/1 €

### Manual training for Microsoft Outlook 2003

Module 1 - Microsoft Outlook 2003	FR					1.60 \$/1 €
Module 2 - Microsoft Outlook 2003	FR					1.60 \$/1 €
Module 3 - Microsoft Outlook 2003	FR					1.60 \$/1 €
Module 4 - Microsoft Outlook 2003	FR					1.60 \$/1 €
Module 5 - Microsoft Outlook 2003	FR					1.60 \$/1 €
Module 6 - Microsoft Outlook 2003	FR					1.60 \$/1 €

1.2

### Manual training for Microsoft PowerPoint 2003

Module 1 - Microsoft PowerPoint 2003	FR					1.60 \$/1 €
Module 2 - Microsoft PowerPoint 2003	FR					1.60 \$/1 €
Module 3 - Microsoft PowerPoint 2003	FR					1.60 \$/1 €
Module 4 - Microsoft PowerPoint 2003	FR					1.60 \$/1 €
Module 5 - Microsoft PowerPoint 2003	FR					1.60 \$/1 €
Module 6 - Microsoft PowerPoint 2003	FR					1.60 \$/1 €

### Manual training for Microsoft Word 2003

Module 1 - Microsoft Word 2003	FR					1.60 \$/1 €
Module 2 - Microsoft Word 2003	FR					1.60 \$/1 €
Module 3 - Microsoft Word 2003	FR					1.60 \$/1 €
Module 4 - Microsoft Word 2003	FR					1.60 \$/1 €
Module 5 - Microsoft Word 2003	FR					1.60 \$/1 €
Module 6 - Microsoft Word 2003	FR					1.60 \$/1 €

### Manual training for Microsoft Access 2003

Module 1 - Microsoft Access 2003	FR					1.60 \$/1 €
Module 2 - Microsoft Access 2003	FR					1.60 \$/1 €
Module 3 - Microsoft Access 2003	FR					1.60 \$/1 €
Module 4 - Microsoft Access 2003	FR					1.60 \$/1 €
Module 5 - Microsoft Access 2003	FR					1.60 \$/1 €
Module 6 - Microsoft Access 2003	FR					1.60 \$/1 €

# MICROSOFT

## MS OFFICE 2002

CATEGORY/SUBCATEGORY	LANGUAGES					PRICE
	Fr.	Eng.	Spa.	Eng./Fr.	Eng./Dutch	

### Manual training for Microsoft Excel 2002

Module 1 - Microsoft Excel 2002	FR					1.60 \$/1 €
Module 2 - Microsoft Excel 2002	FR					1.60 \$/1 €
Module 3 - Microsoft Excel 2002	FR					1.60 \$/1 €
Module 4 - Microsoft Excel 2002	FR					1.60 \$/1 €
Module 5 - Microsoft Excel 2002	FR					1.60 \$/1 €
Module 6 - Microsoft Excel 2002	FR					1.60 \$/1 €

### Manual training for Microsoft PowerPoint 2002

Module 1 - Microsoft PowerPoint 2002	FR					1.60 \$/1 €
Module 2 - Microsoft PowerPoint 2002	FR					1.60 \$/1 €
Module 3 - Microsoft PowerPoint 2002	FR					1.60 \$/1 €
Module 4 - Microsoft PowerPoint 2002	FR					1.60 \$/1 €
Module 5 - Microsoft PowerPoint 2002	FR					1.60 \$/1 €
Module 6 - Microsoft PowerPoint 2002	FR					1.60 \$/1 €

# MICROSOFT

## MS OFFICE 2002

CATEGORY/SUBCATEGORY	LANGUAGES					PRICE
	Fr.	Eng.	Spa.	Eng./Fr.	Eng./Dutch	

### Manual training for Microsoft Word 2002

Module 1 - Microsoft Word 2002	FR					1.60 \$/1 €
Module 2 - Microsoft Word 2002	FR					1.60 \$/1 €
Module 3 - Microsoft Word 2002	FR					1.60 \$/1 €
Module 4 - Microsoft Word 2002	FR					1.60 \$/1 €
Module 5 - Microsoft Word 2002	FR					1.60 \$/1 €
Module 6 - Microsoft Word 2002	FR					1.60 \$/1 €

# MICROSOFT

## MS WINDOWS

CATEGORY/SUBCATEGORY	LANGUAGES					PRICE
	Fr.	Eng.	Spa.	Eng./Fr.	Eng./Dutch	

### Manual training for Microsoft Windows 7

Module 1 - Microsoft Windows 7	FR					1.60 \$/1 €
Module 2 - Microsoft Windows 7	FR					1.60 \$/1 €
Module 3 - Microsoft Windows 7	FR					1.60 \$/1 €

### Manual training for Microsoft Windows Vista

Module 1 - Microsoft Windows Vista	FR					1.60 \$/1 €
Module 2 - Microsoft Windows Vista	FR					1.60 \$/1 €
Module 3 - Microsoft Windows Vista	FR					1.60 \$/1 €

### Manual training for Microsoft Windows XP

Module 1 - Microsoft Windows XP	FR					1.60 \$/1 €
Module 2 - Microsoft Windows XP	FR					1.60 \$/1 €
Module 3 - Microsoft Windows XP	FR					1.60 \$/1 €

# OPENOFFICE.ORG

## OPENOFFICE.ORG VERSION 2

CATEGORY/SUBCATEGORY	LANGUAGES					PRICE
	Fr.	Eng.	Spa.	Eng./Fr.	Eng./Dutch	

### Manual training for OpenOffice.org Writer 2.0

Module 1 - OpenOffice.org Writer 2.0	FR					1.60 \$/1 €
Module 2 - OpenOffice.org Writer 2.0	FR					1.60 \$/1 €
Module 3 - OpenOffice.org Writer 2.0	FR					1.60 \$/1 €

# LOTUS

## LOTUS NOTES

CATEGORY/SUBCATEGORY	LANGUAGES					PRICE
	Fr.	Ang.	Spa.	Eng./Fr.	Eng./Dutch	

### Manual training for Lotus Notes 6

Module 1 - Lotus Notes 6	FR					1.60 \$/1 €
Module 2 - Lotus Notes 6	FR					1.60 \$/1 €
Module 3 - Lotus Notes 6	FR					1.60 \$/1 €